



# Orleans Parish School Board

## 2018-2019 School Year Organizational Structure

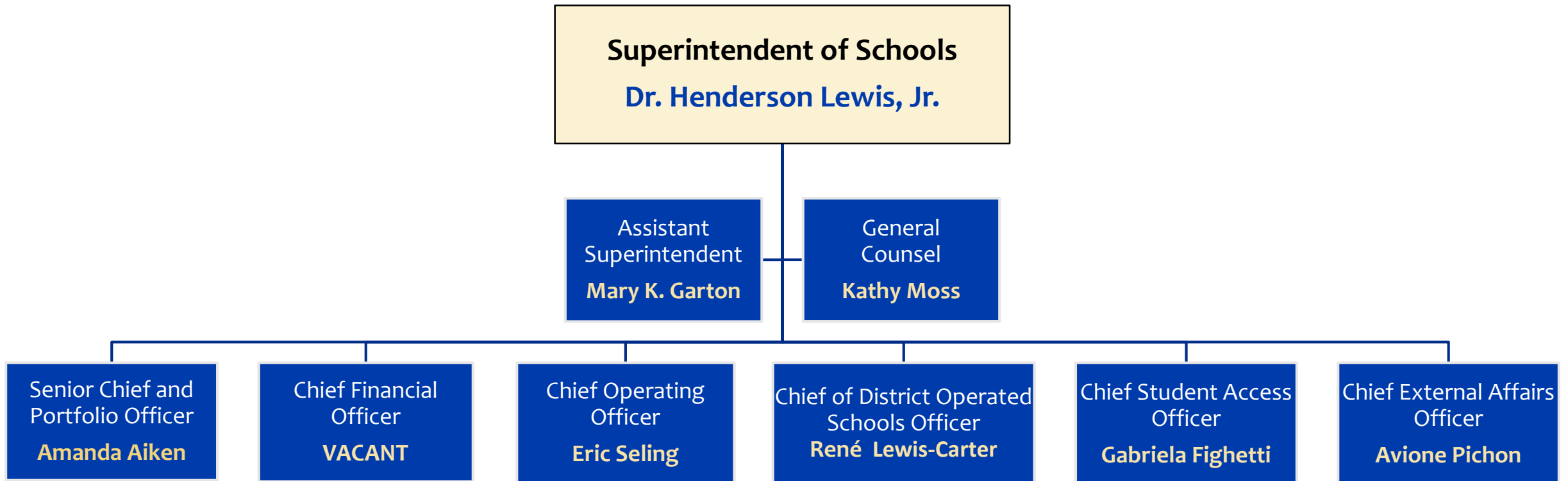
### OUR VISION:

Every student receives a high-quality education that fosters his or her individual capabilities, while ensuring that they thrive and are prepared for civic, social, and economic success.

January 17, 2019



# 2018-2019 Leadership Staff



# Legal Department



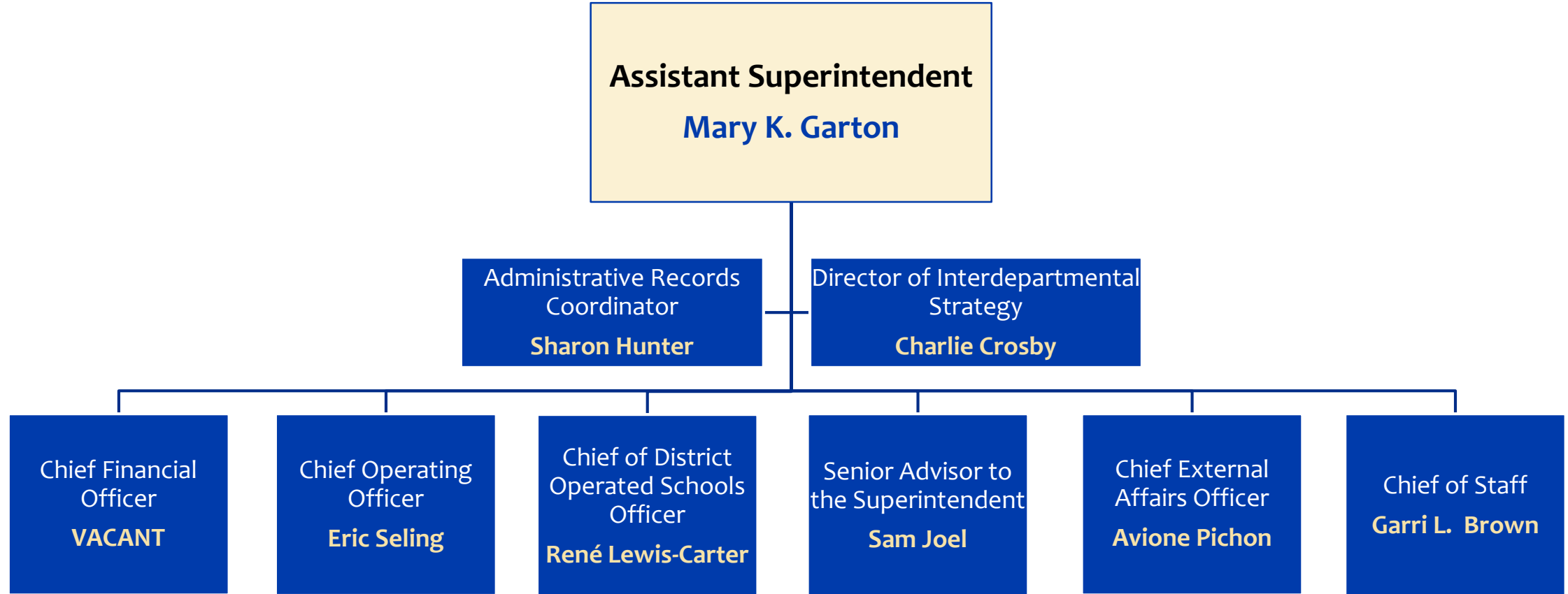
**General Counsel**  
**Kathy Moss**

**Deputy General Counsel**  
**Candice Forest**

January 17, 2019

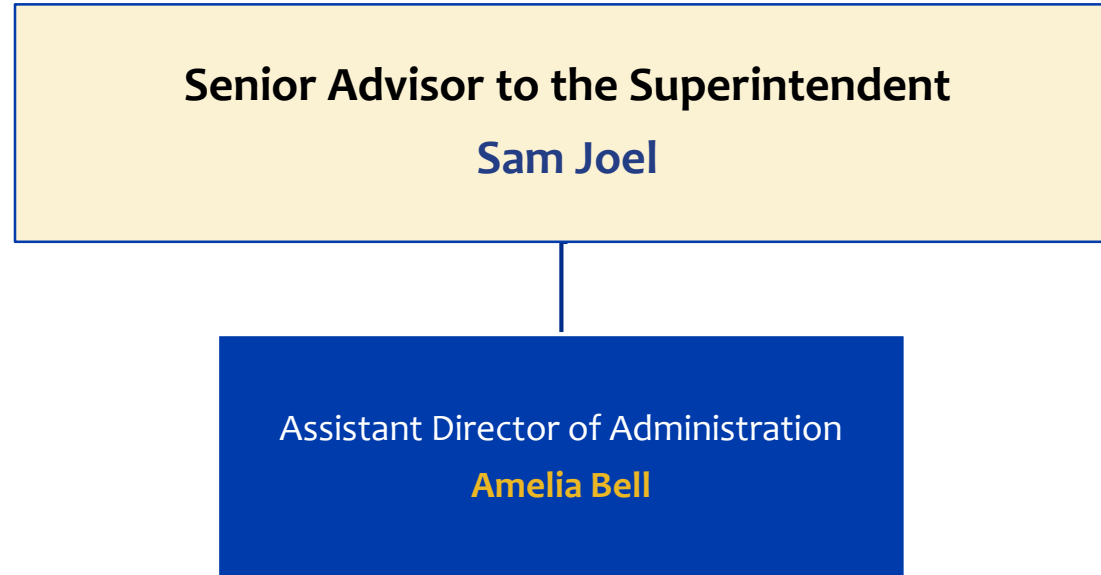


# Assistant Superintendent's Office



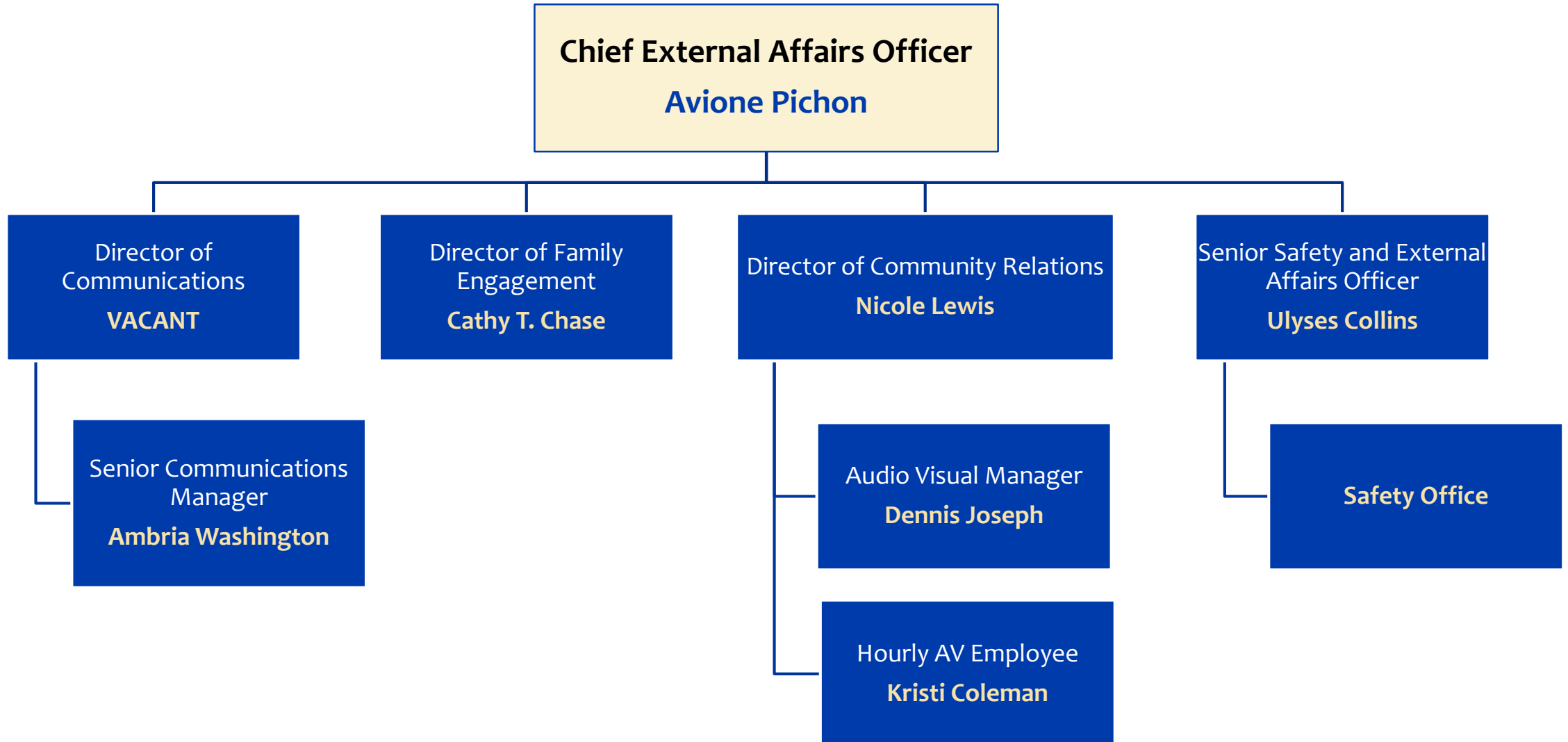


# Strategic Operations Office



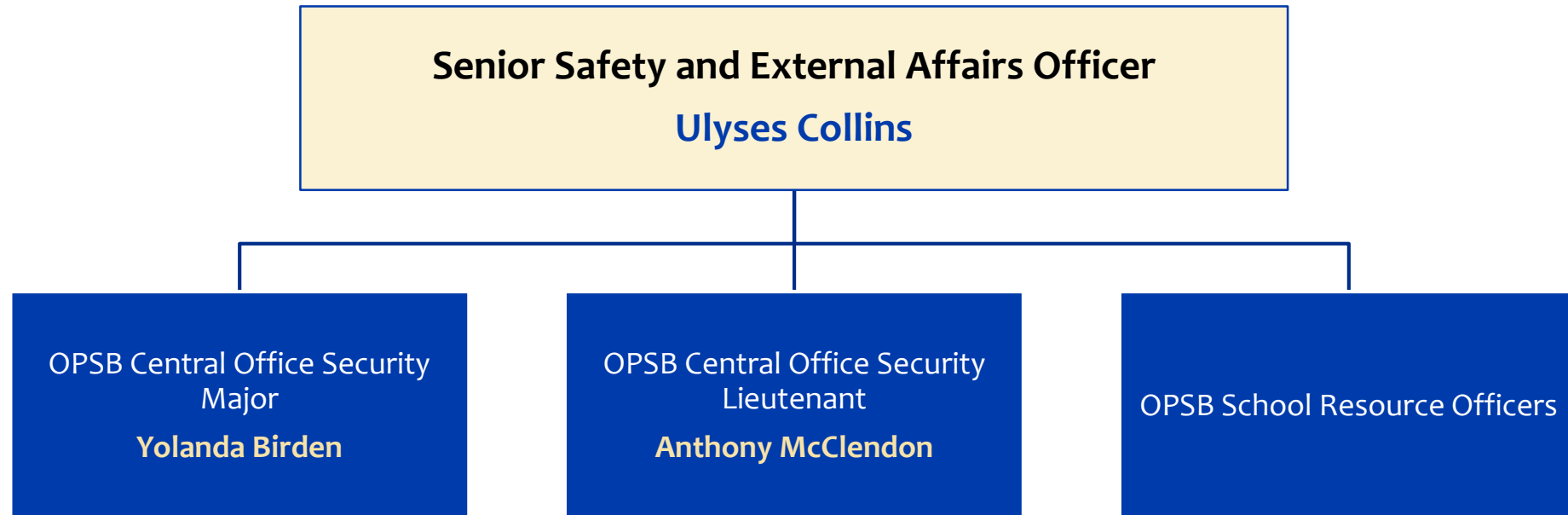


# External Affairs Office

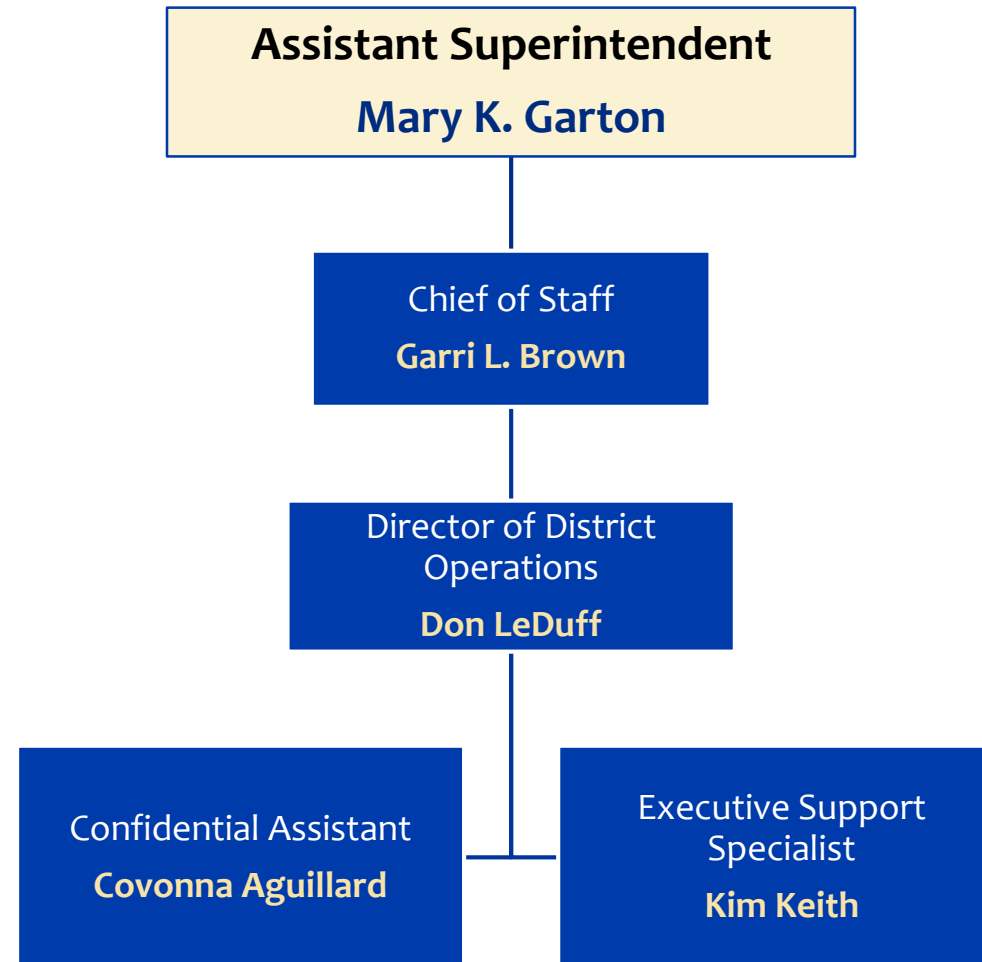




# External Affairs Office: Safety



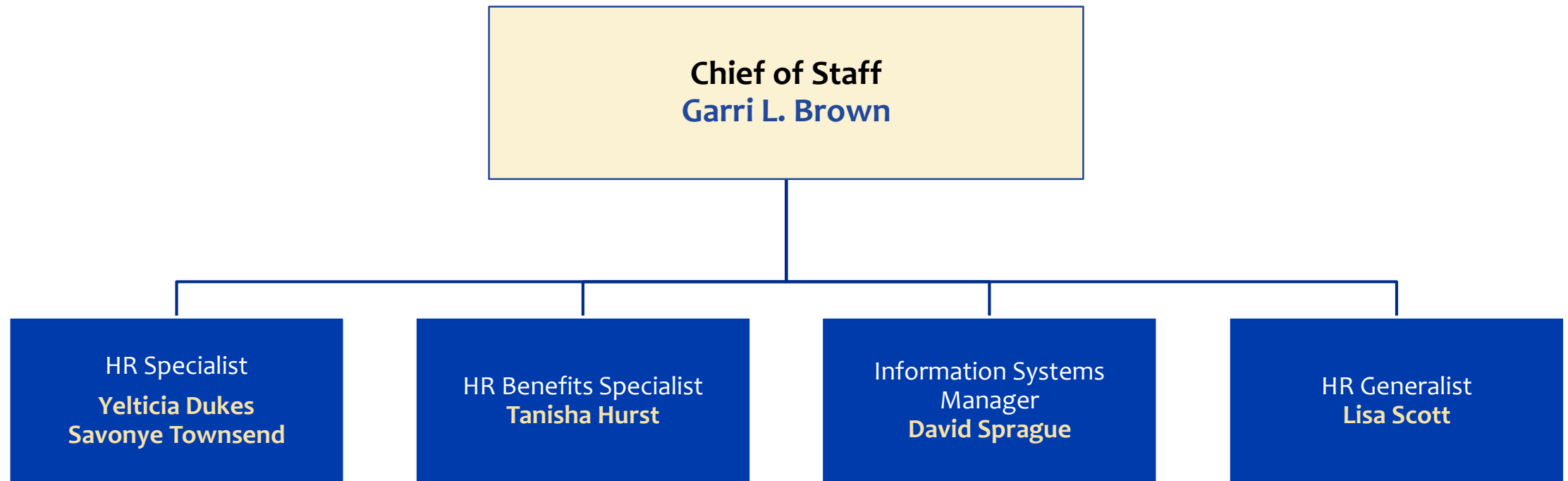
# Executive Operations Office





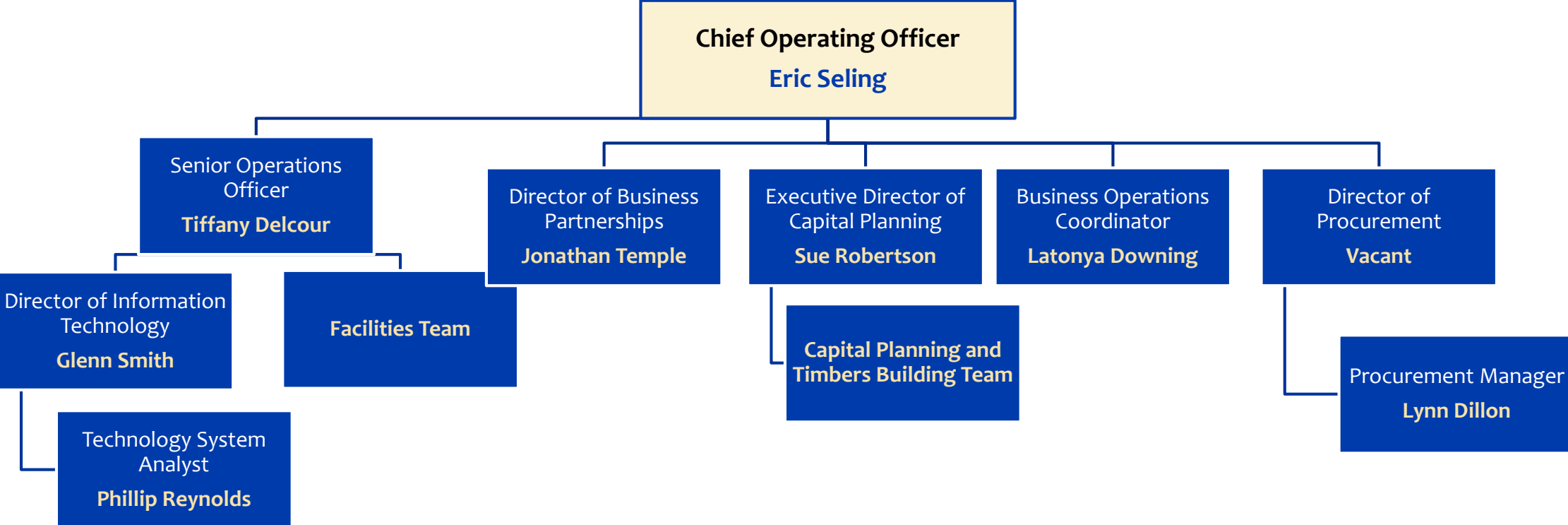


# Human Resources



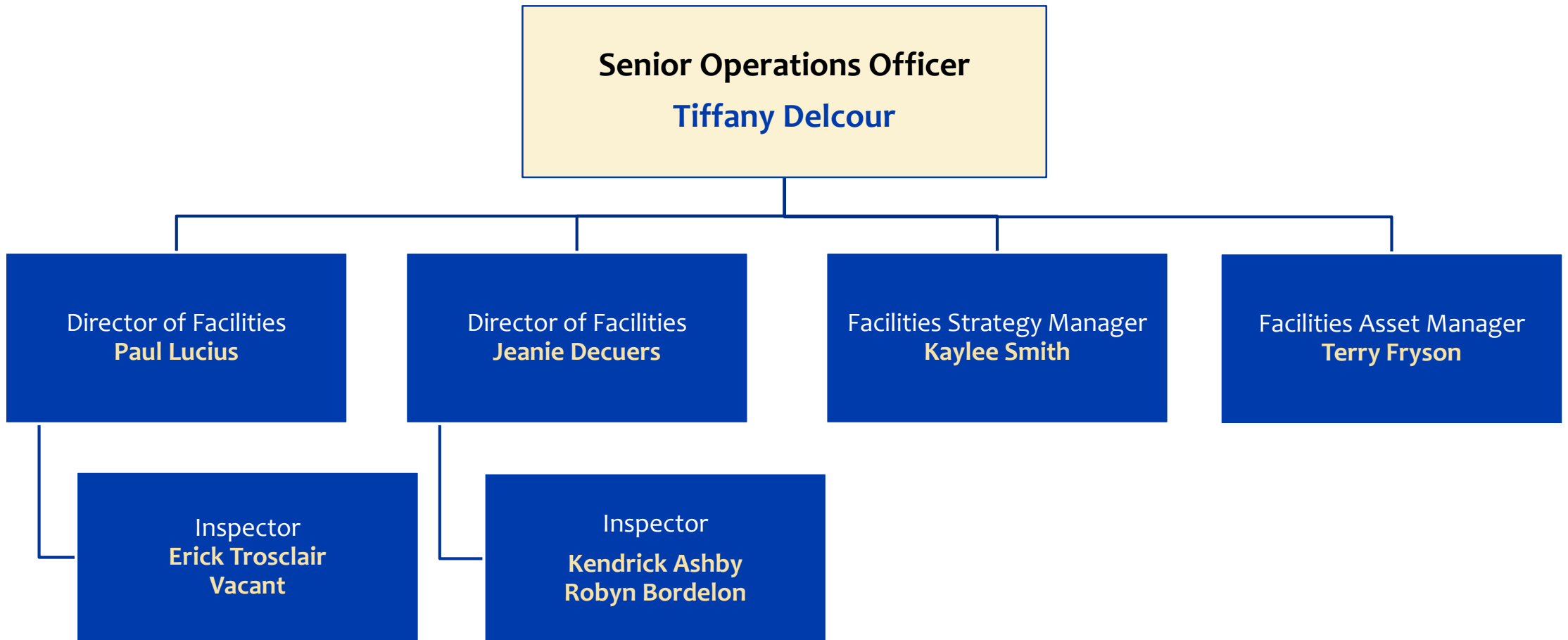


# Operations

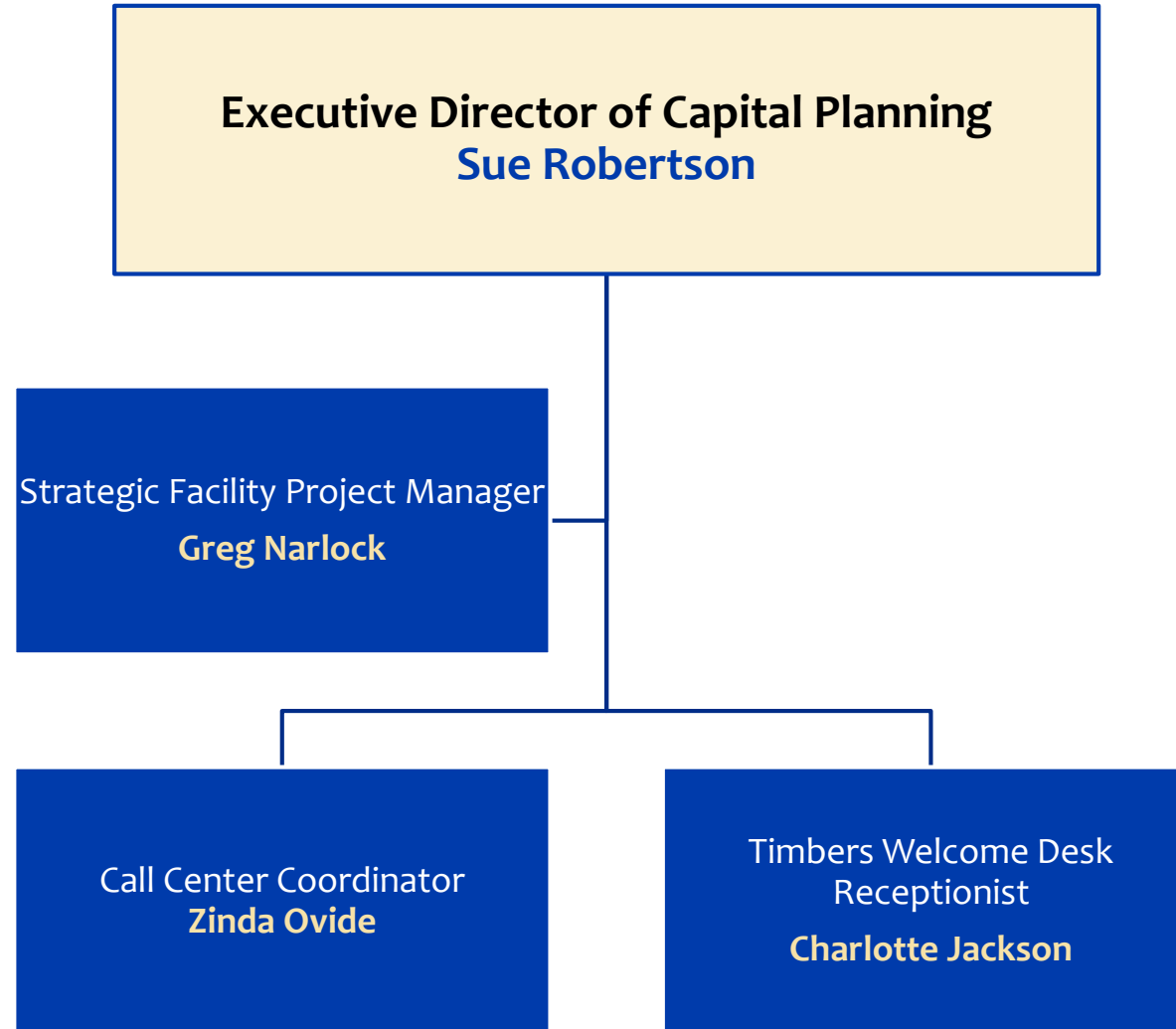




# Operations: Facilities

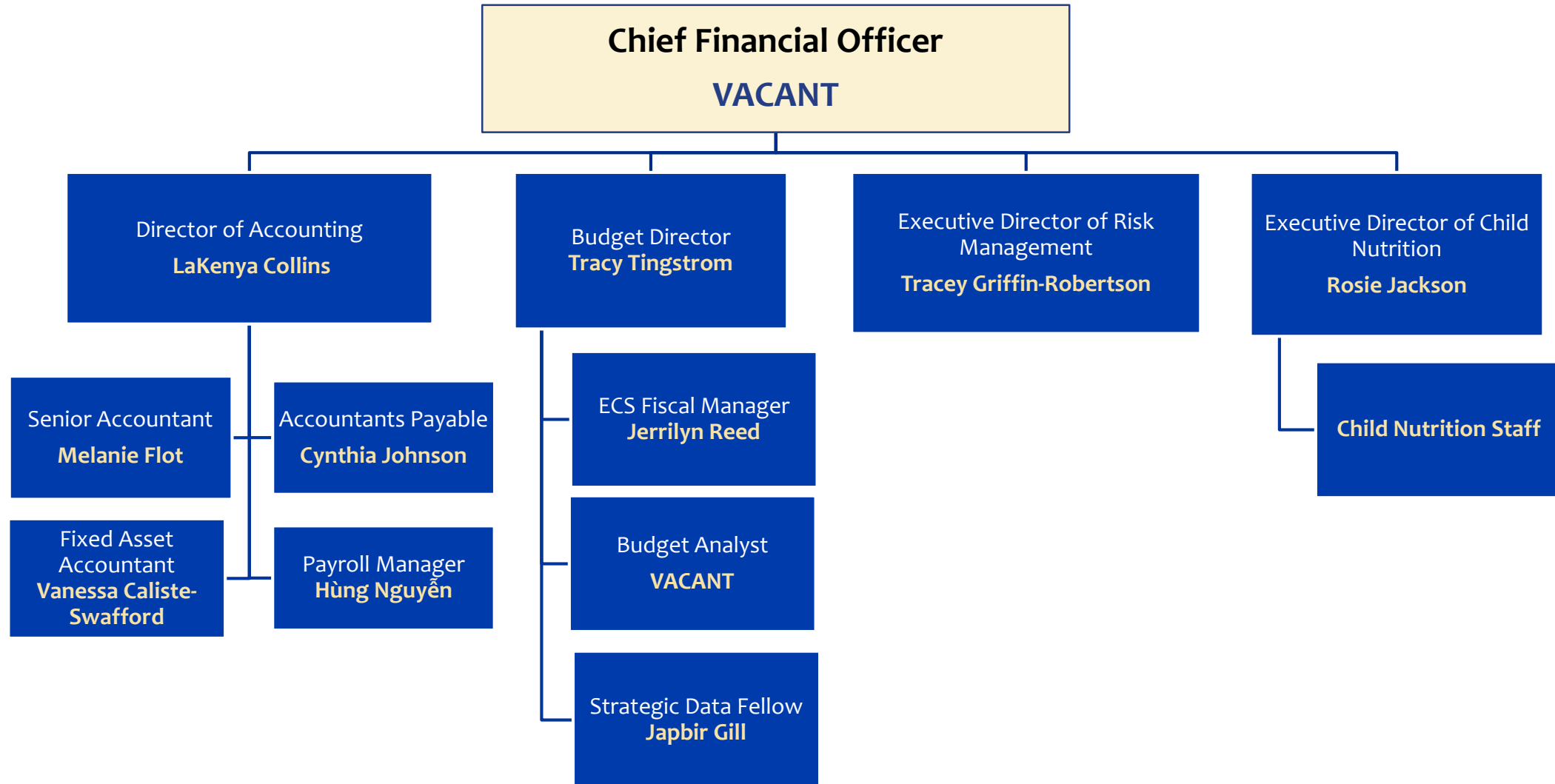


# Operations: Capital Planning

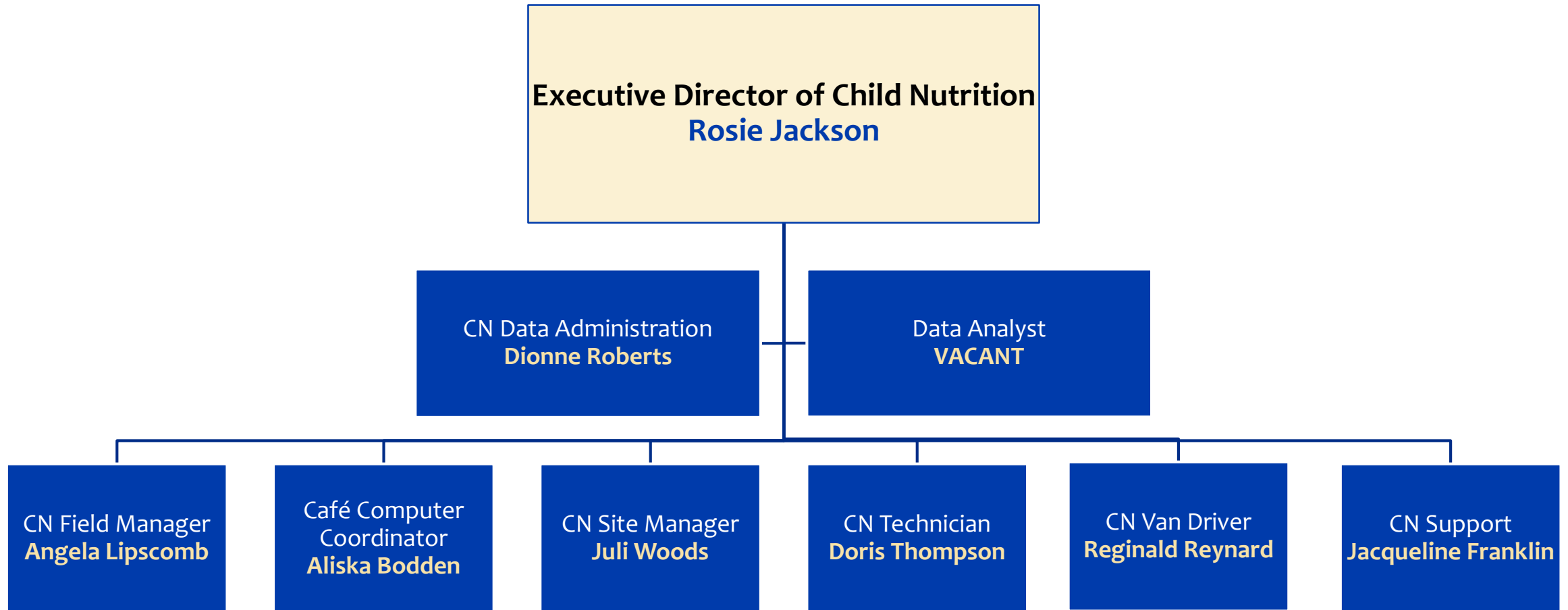




# Finance

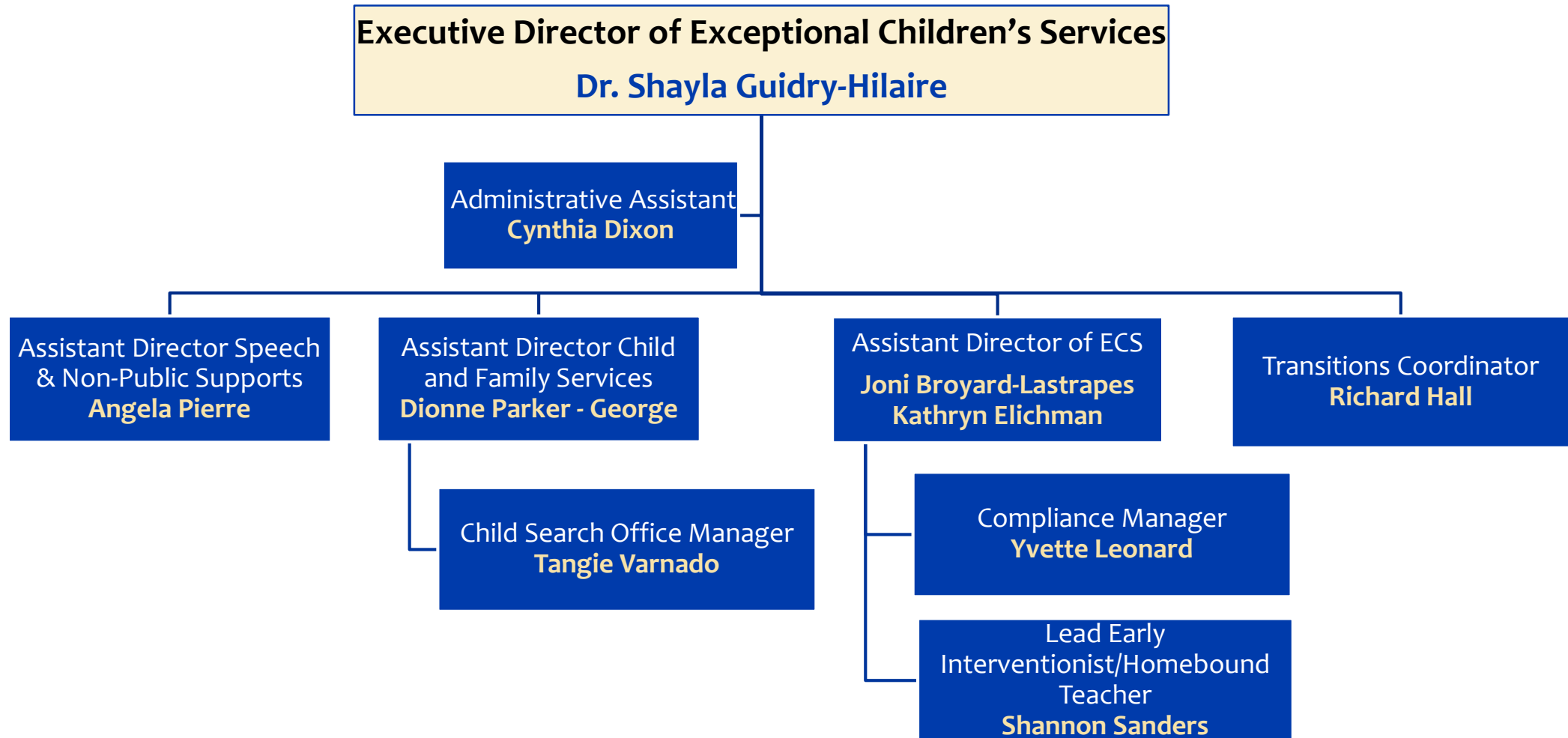


# Finance: Child Nutrition





# Schools Office: Exceptional Children's Services





# Schools Office: Exceptional Children's Services

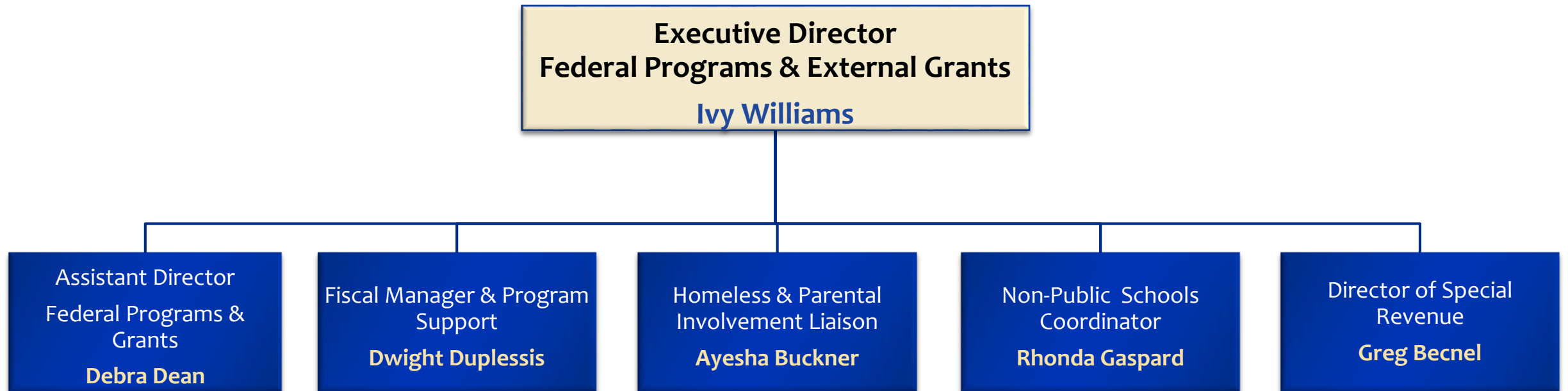


## Speech Pathologists, Support & Appraisal, Aides, Social Workers, and Hourly Support

Bonita Abadie	Waynette Combs	Larissa Lewis	Ashley Nunez	Jasmine Scott
Terese Alexander	Nakia Crockett	Cayla Littles	Marilyn O'connor	Patricia Smith
Tracy Bercy	Cynthia Dixon	Yvette Leonard	Venus Parker	Carolyn Tate
Kim Bishop	Edra Grimm	Stephanie Lorio	Patricia Parker	Lerqueldra Turner
Wendy Bordenave	Rhonda Guillory	Manya Louis	Johnny Payton	Tangie Varnado
C'onda Bowman	Kate Helbig	Lawanda Love	Conneen Powell	Shontra Varnado
Grace Britsch	Kandace Houston	Linda McGary	Helen Psareas	
Tamyra Brooks Joseph	Rebecca Jamison	Dawne Moffett	Jennifer Rious	
Jennifer Broyard	Barbara Jefferson	Norwatha Monconduit	Kenya Robertson	
Erin Byrne	Alethea Johnson	Gloria Moore	Cheryl Robichaux	
Maureen Cadres	Adrian Jordan	Dorothy Moses	Shannon Sanders	
Kristin Castilla	Kirsten Kempele	Julie Navar	Hila Savoie	
Janice Charleville	William Lavender	Tanya Norris	Dane Schindler	

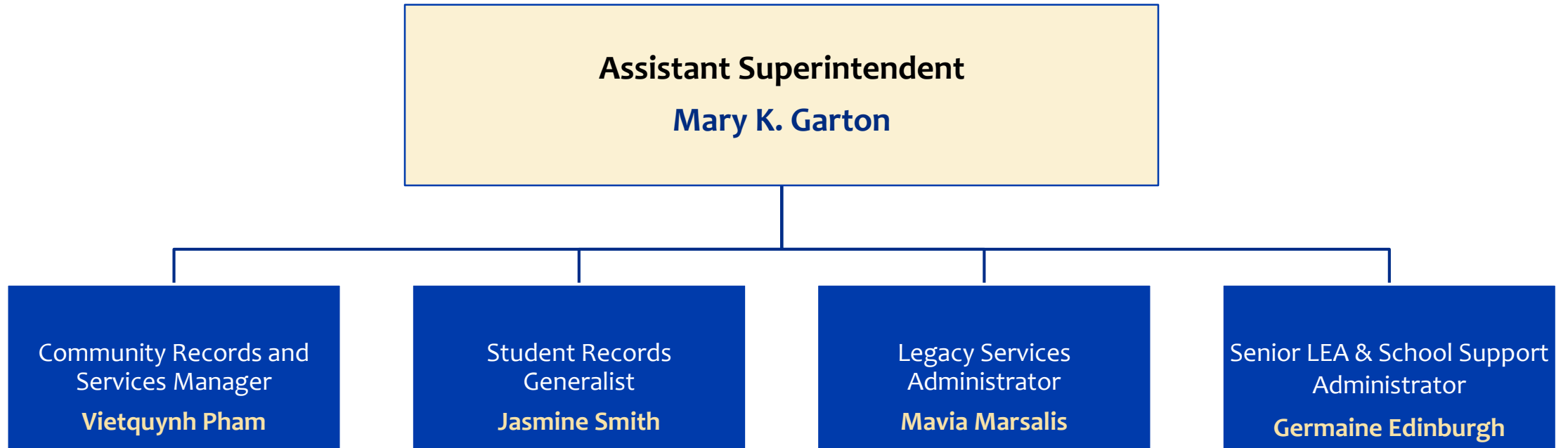


# Schools Office: Federal Programs & External Grants



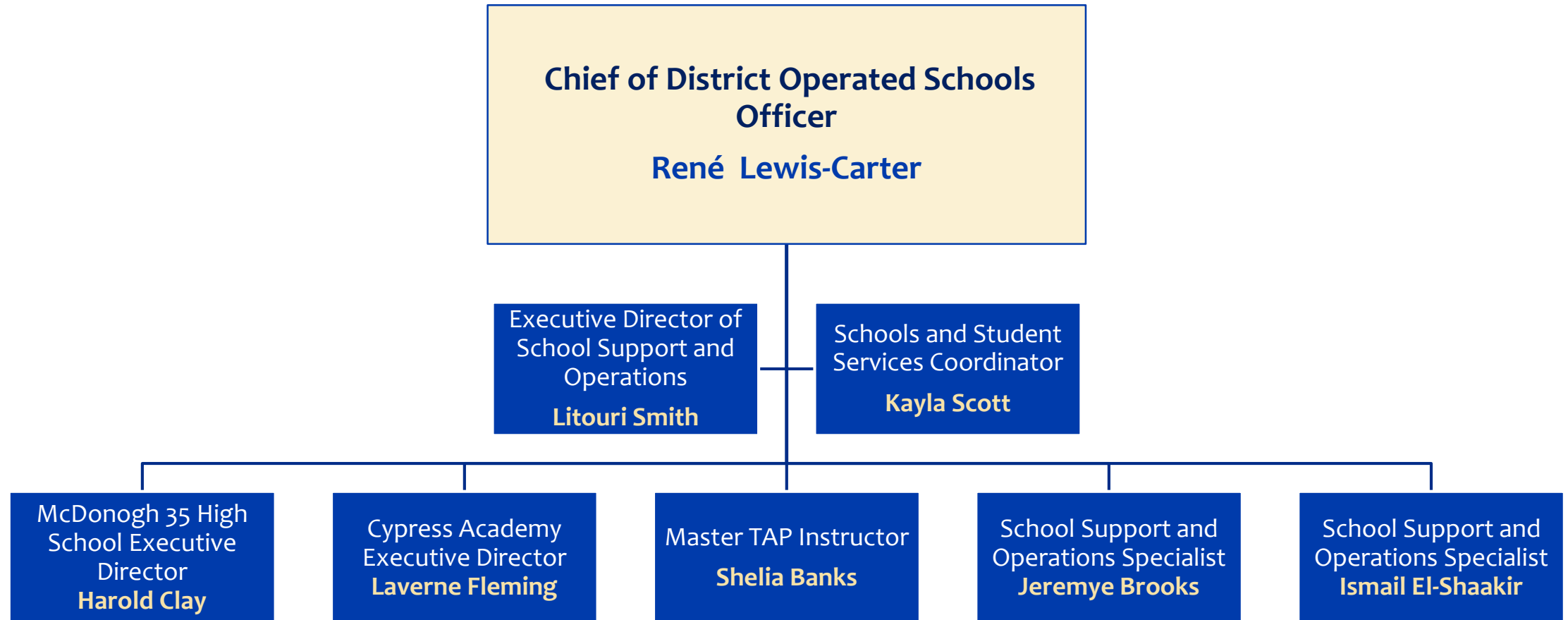


# Schools Office: Assessment, Records and Interpretation/Translation Services



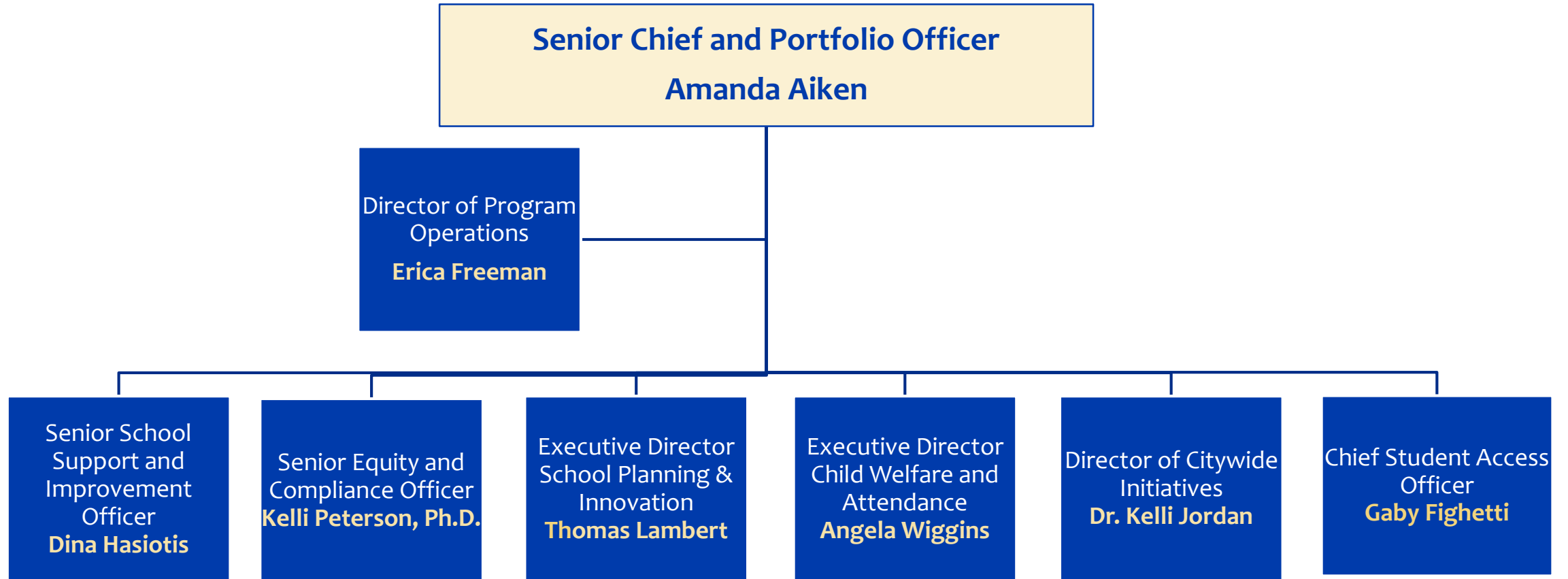


# Schools Office: Direct Run Schools Team



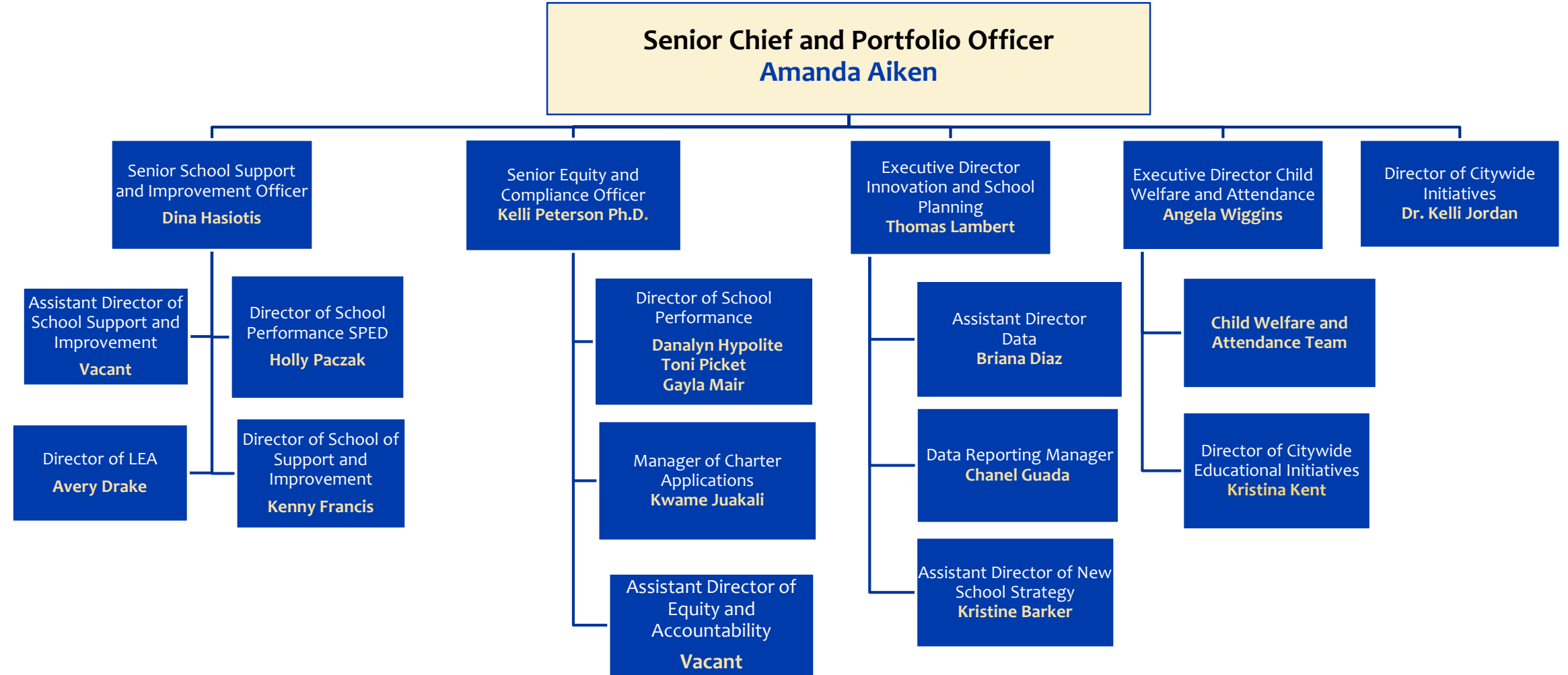


# Senior Chief and Portfolio Officer



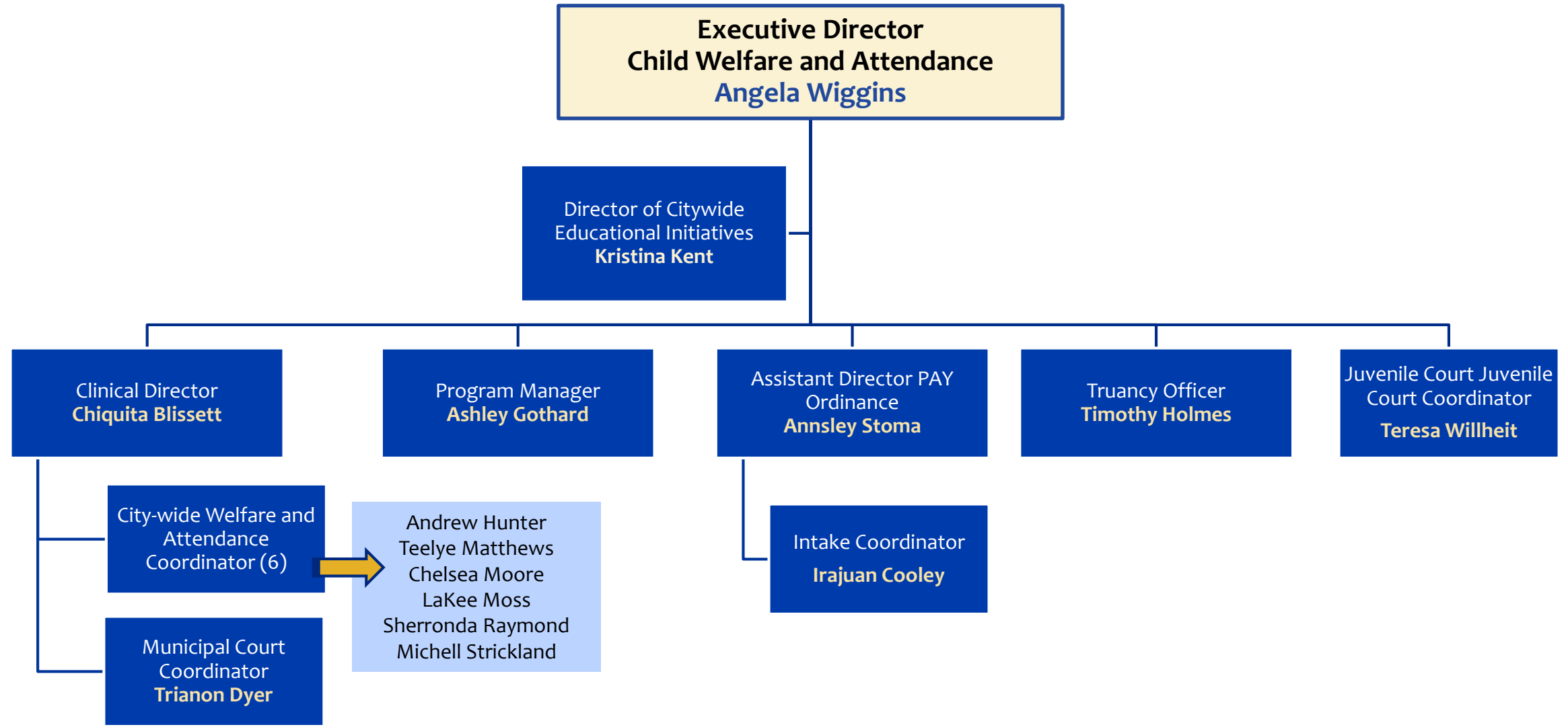


# Portfolio Office



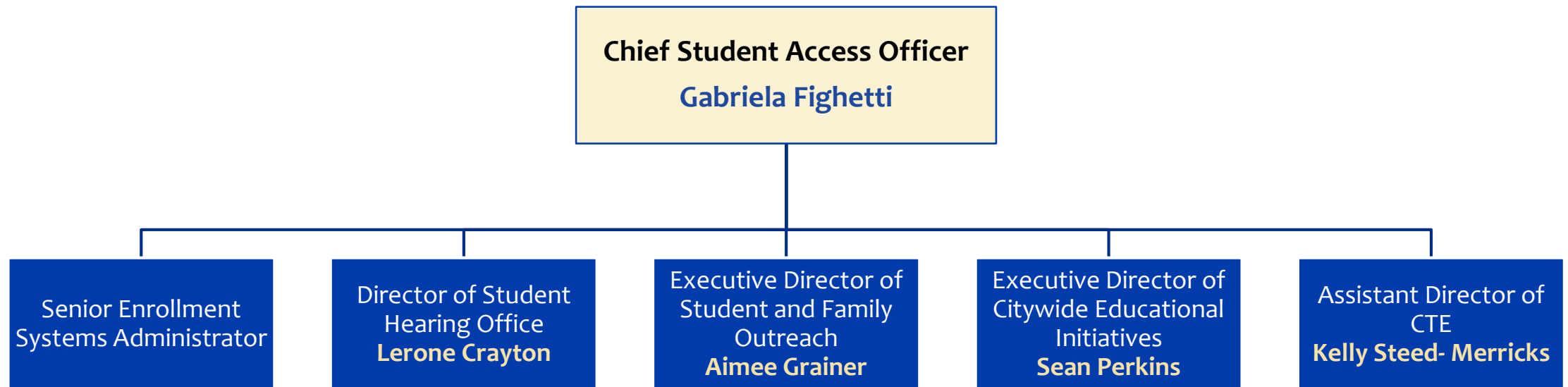


# Child Welfare and Attendance Office





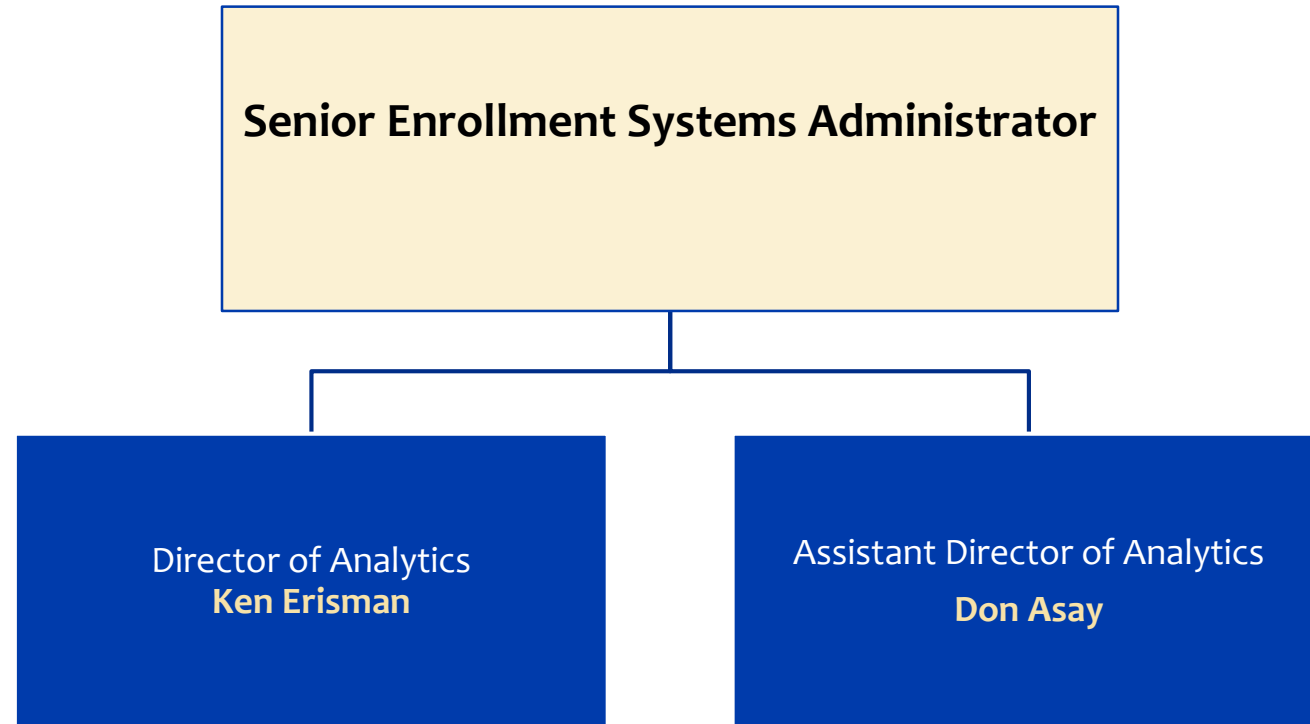
# Student Access Office





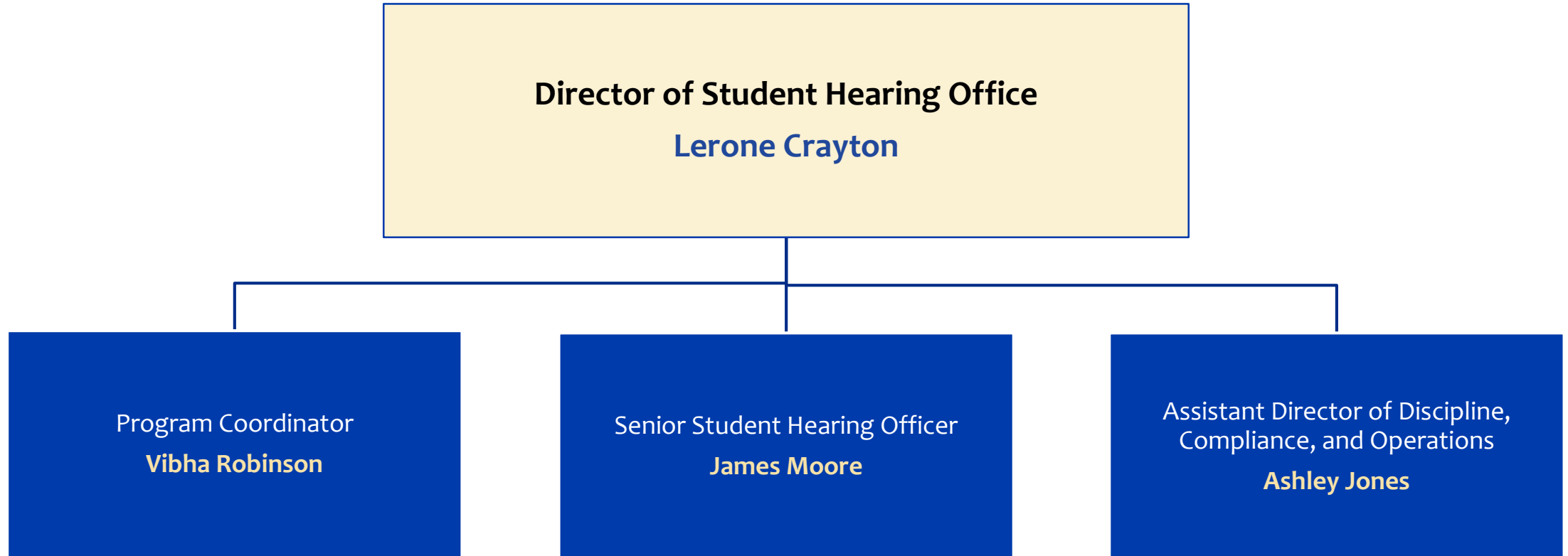


# Student Access Office





# Student Access Office





# Student Access Office

