



Orleans Parish School Board

2018-2019 School Year Organizational Structure

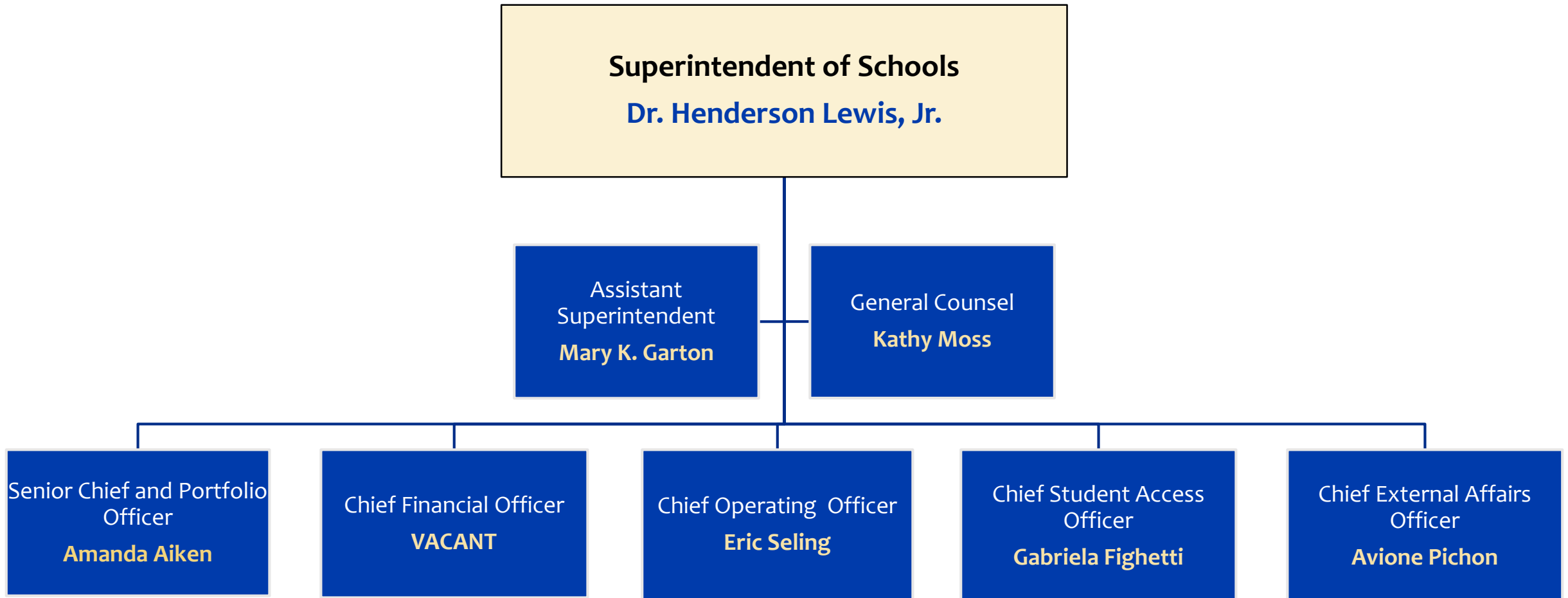
OUR VISION:

Every student receives a high-quality education that fosters his or her individual capabilities, while ensuring that they thrive and are prepared for civic, social, and economic success.

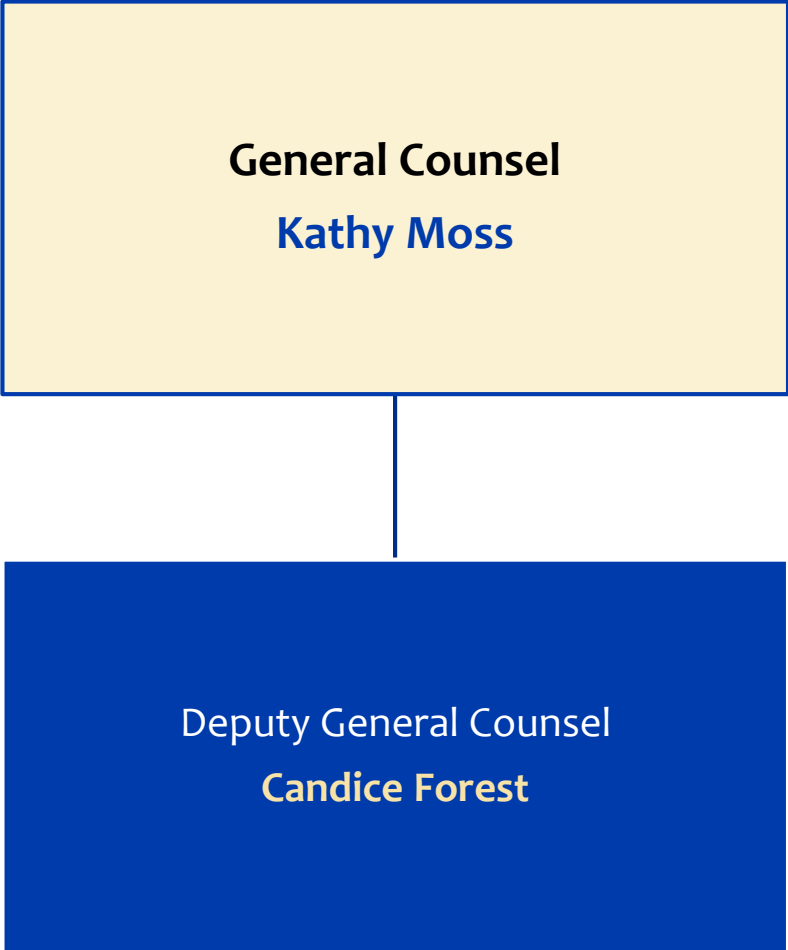
March 22, 2019



2018-2019 Leadership Staff

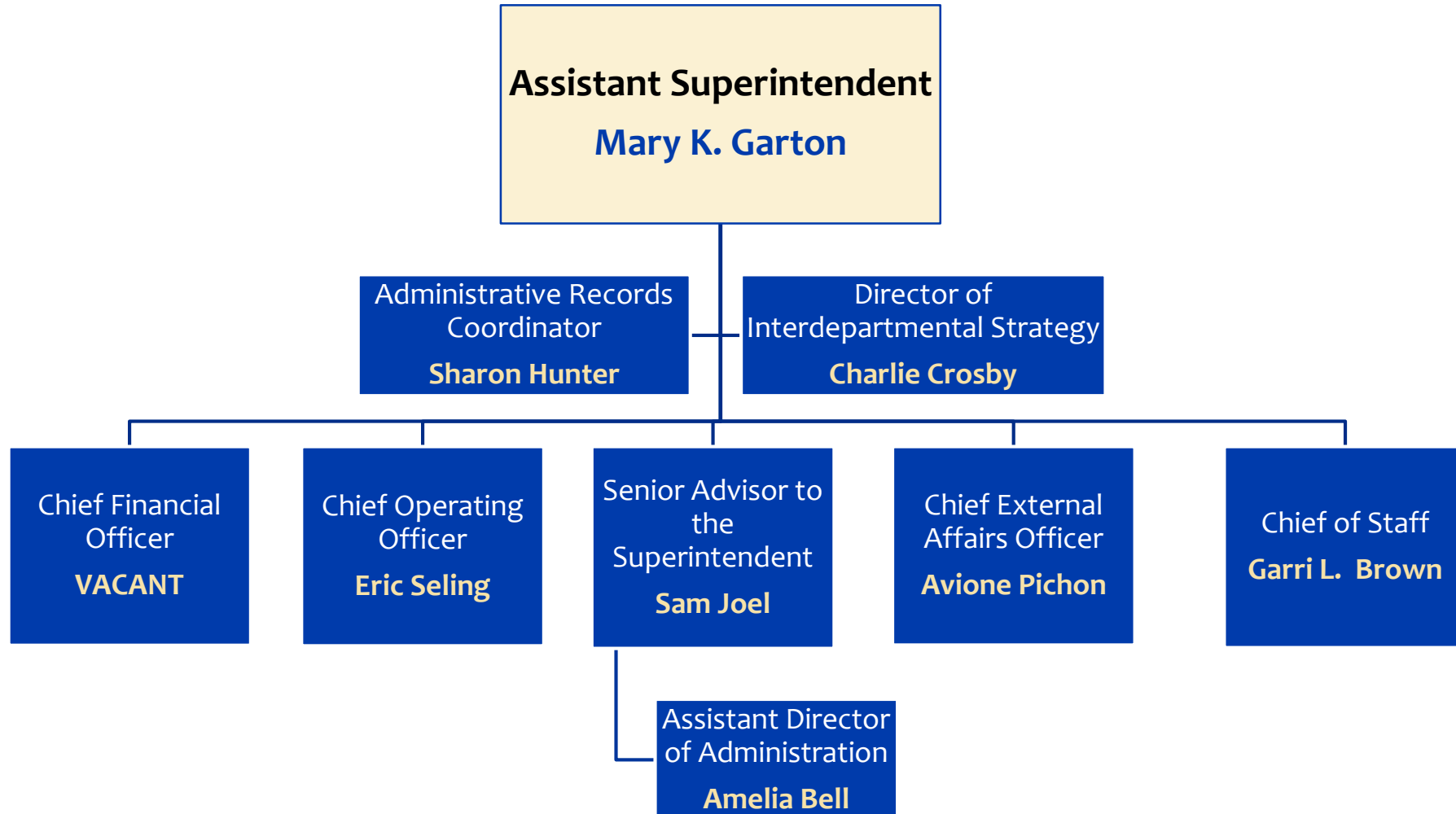


Legal Department



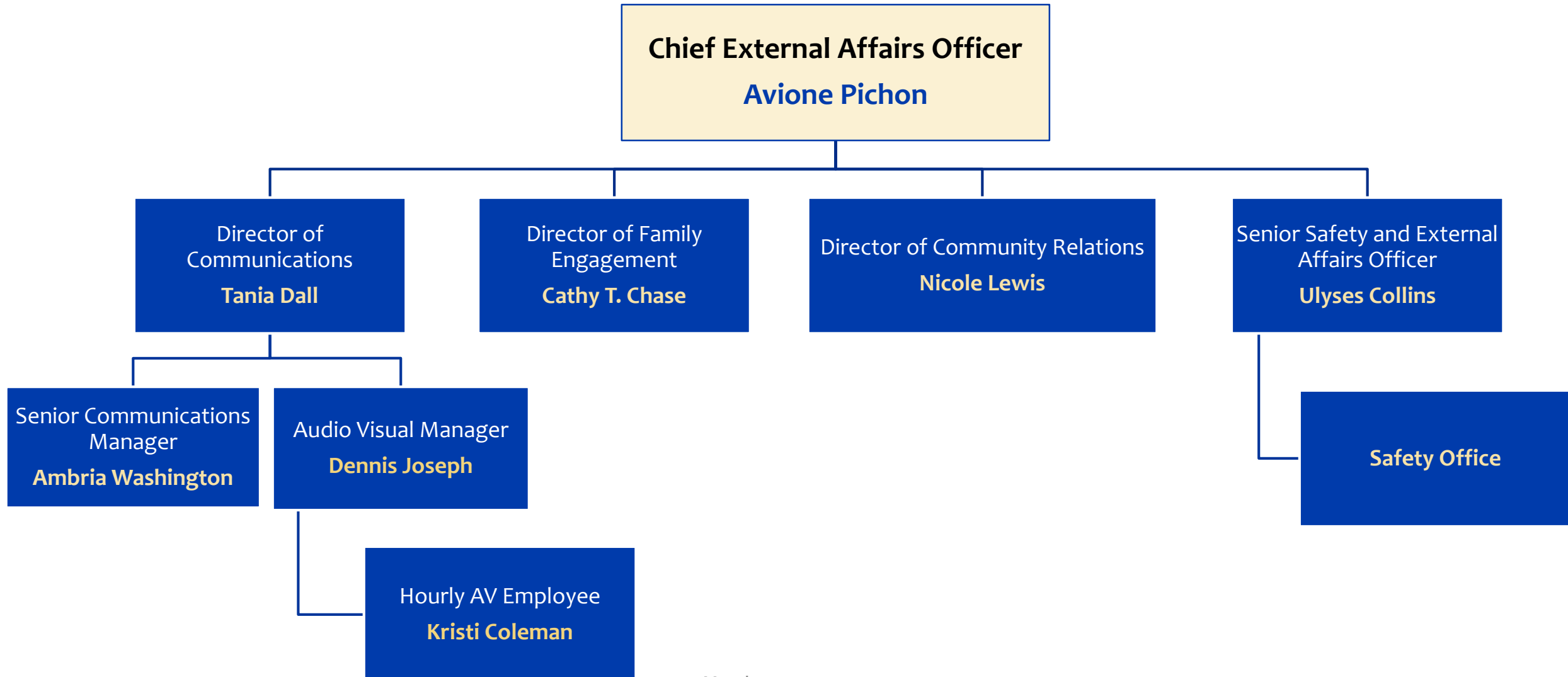


Assistant Superintendent's Office



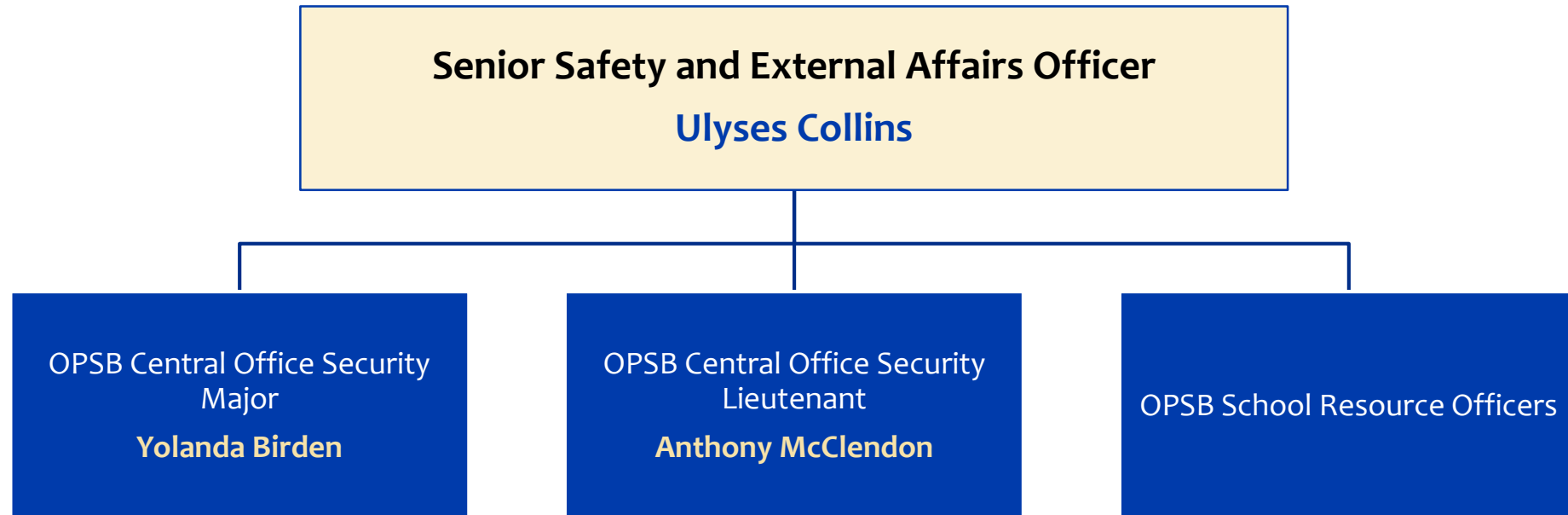


External Affairs Office

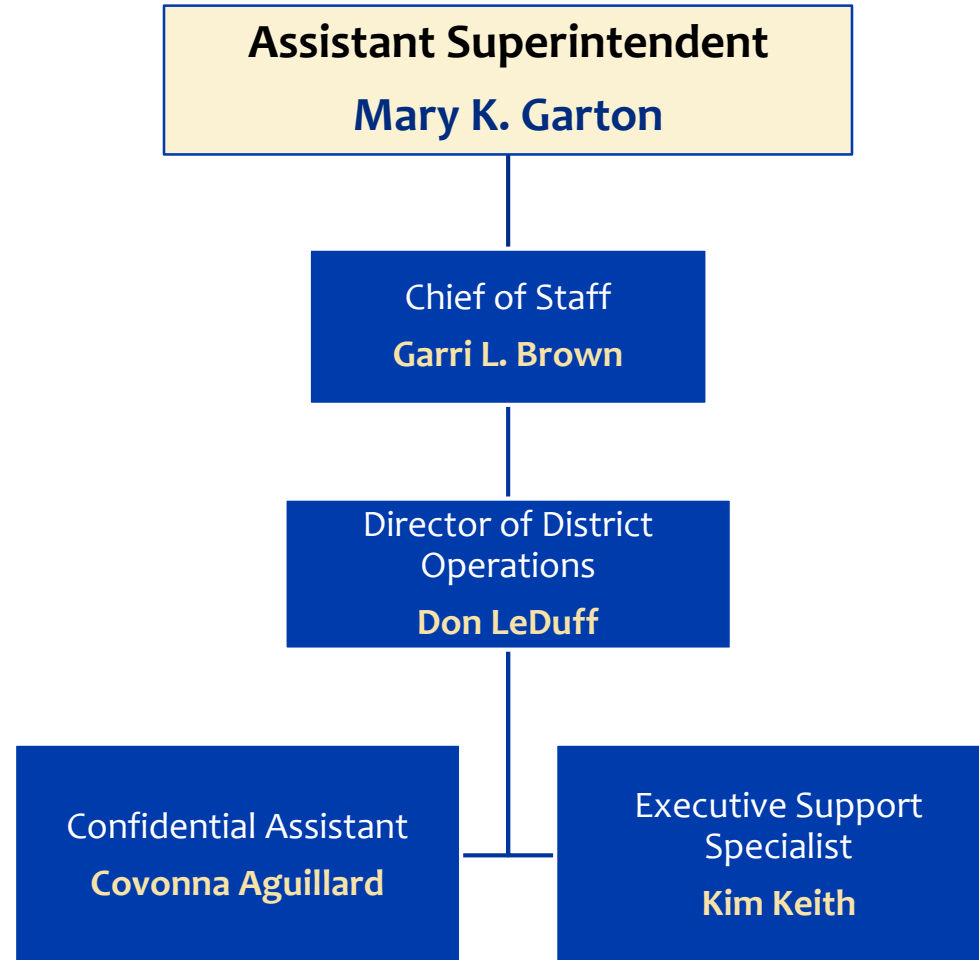




External Affairs Office: Safety

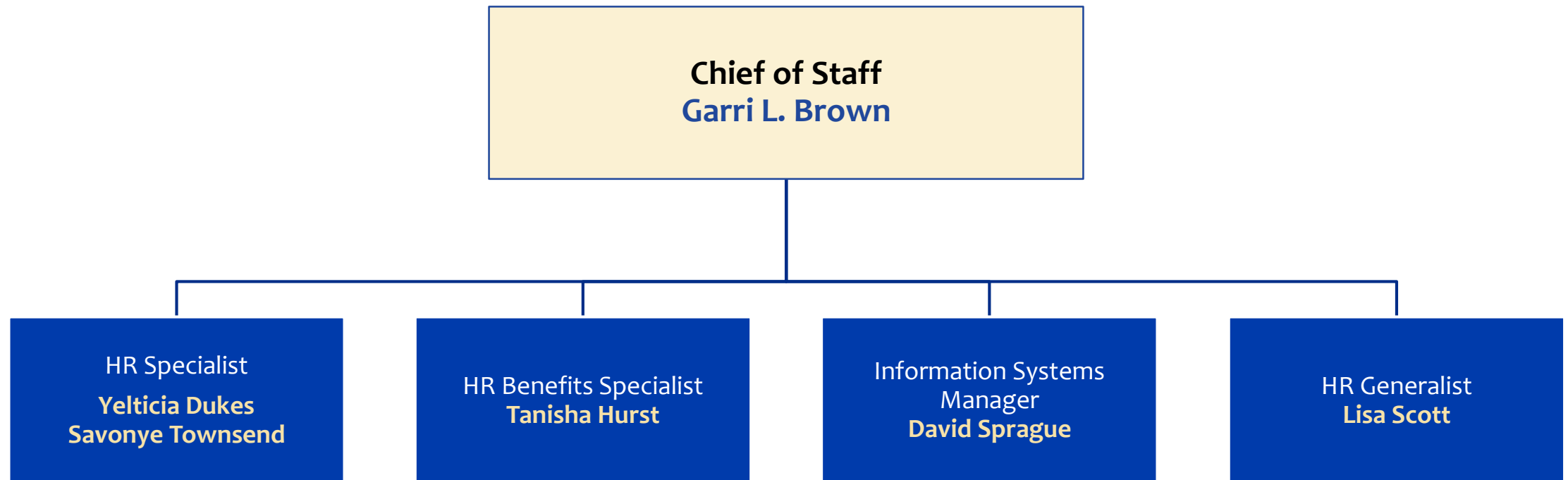


Executive Operations Office



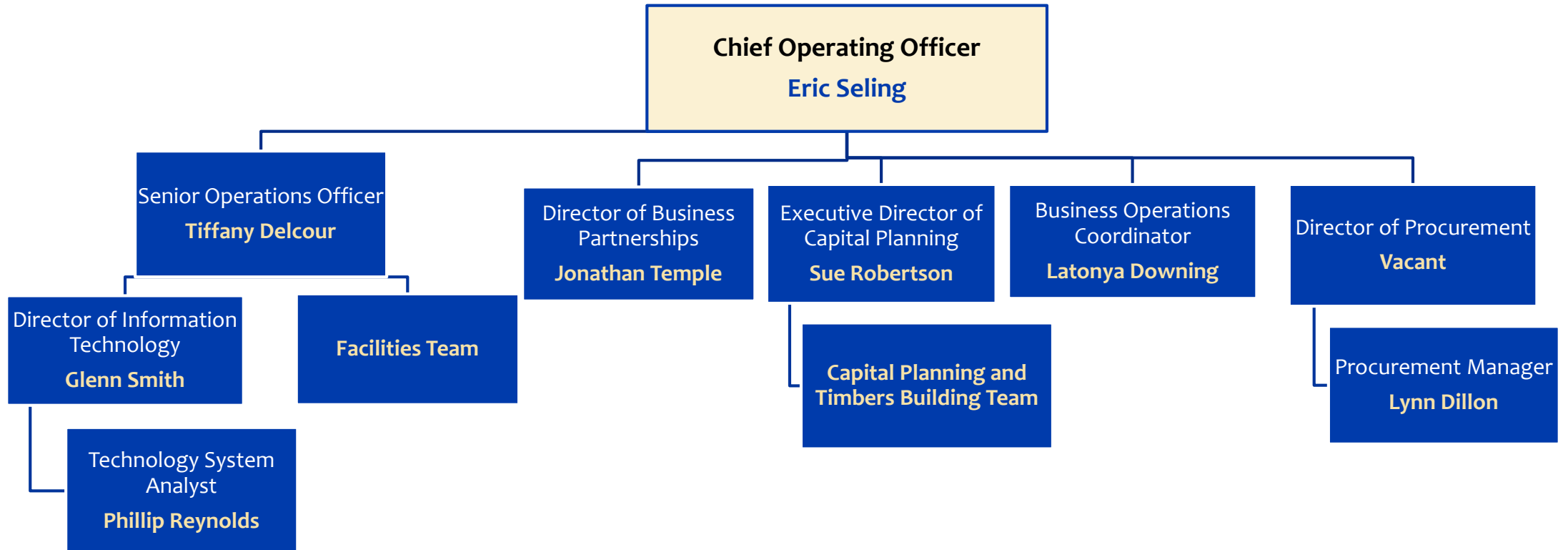


Human Resources



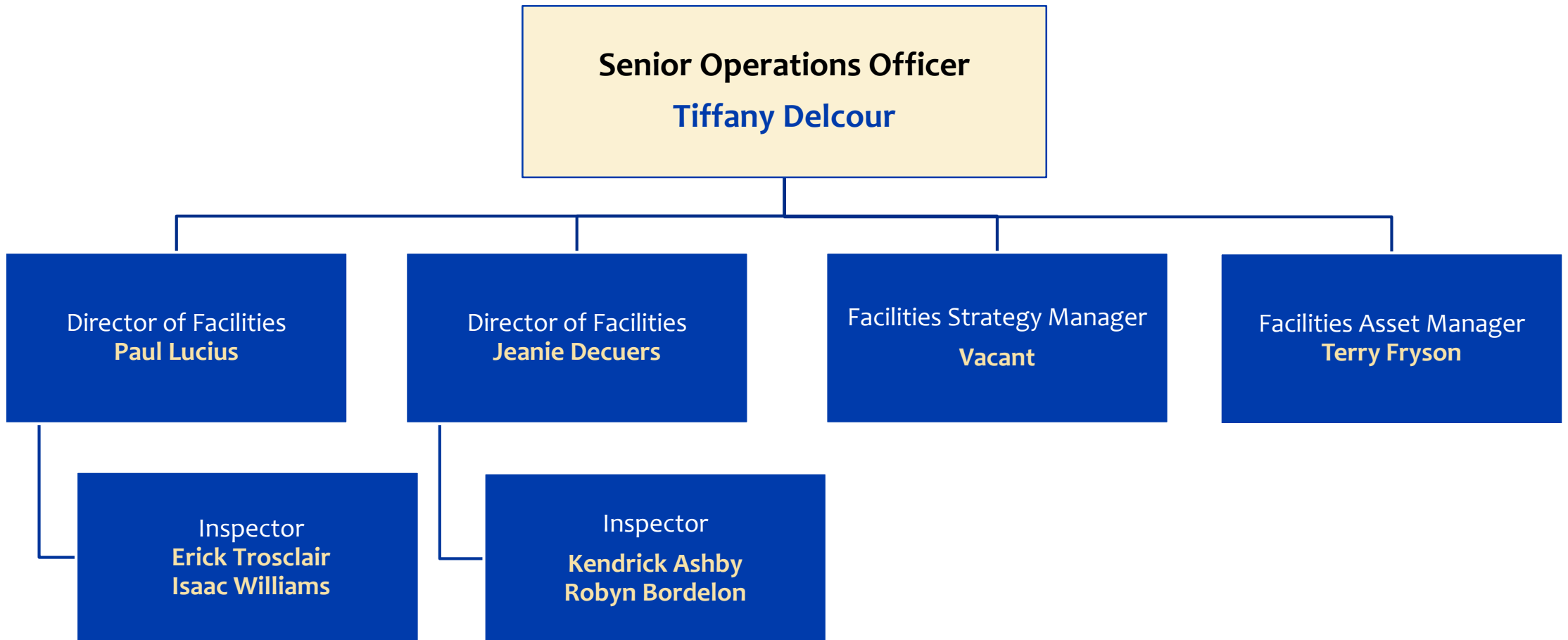


Operations

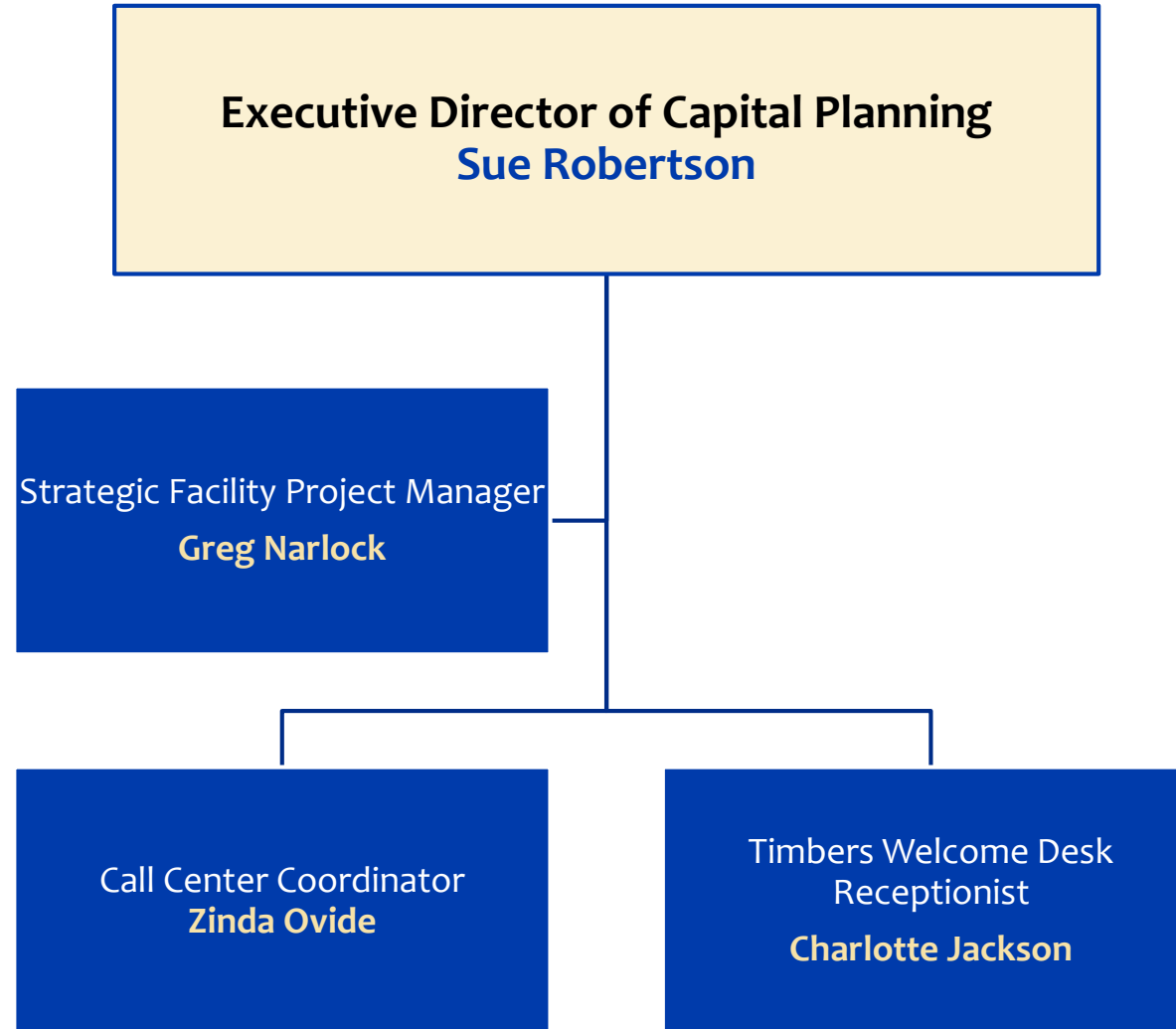




Operations: Facilities

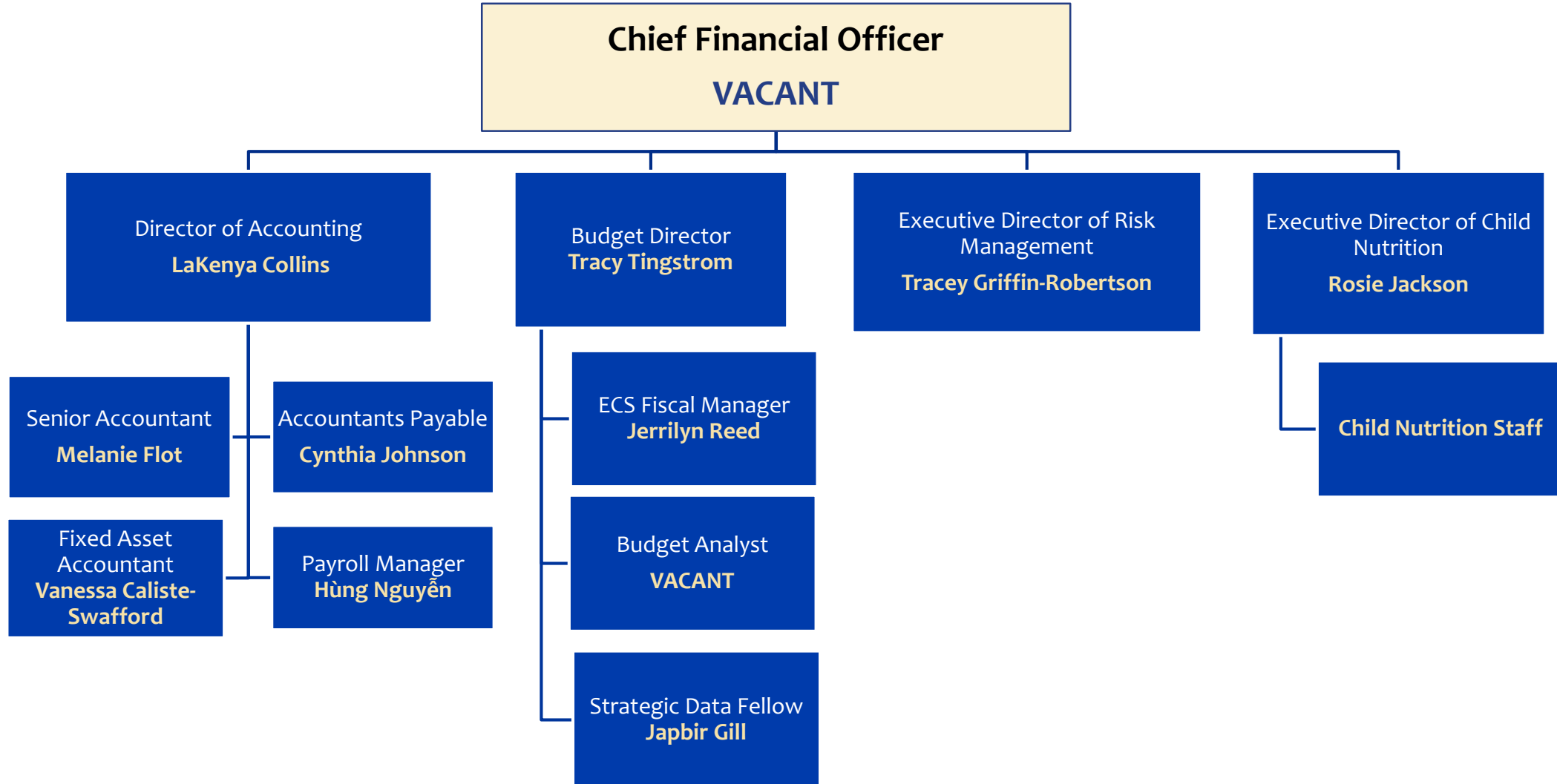


Operations: Capital Planning

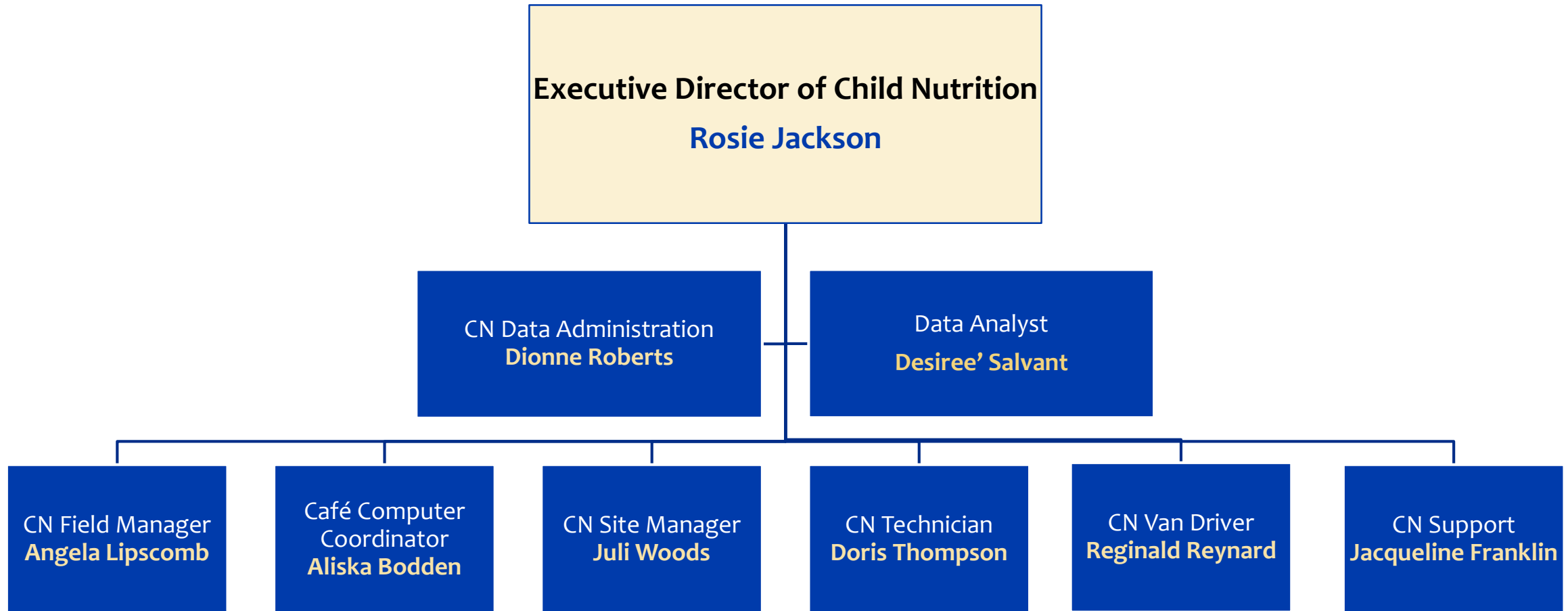




Finance

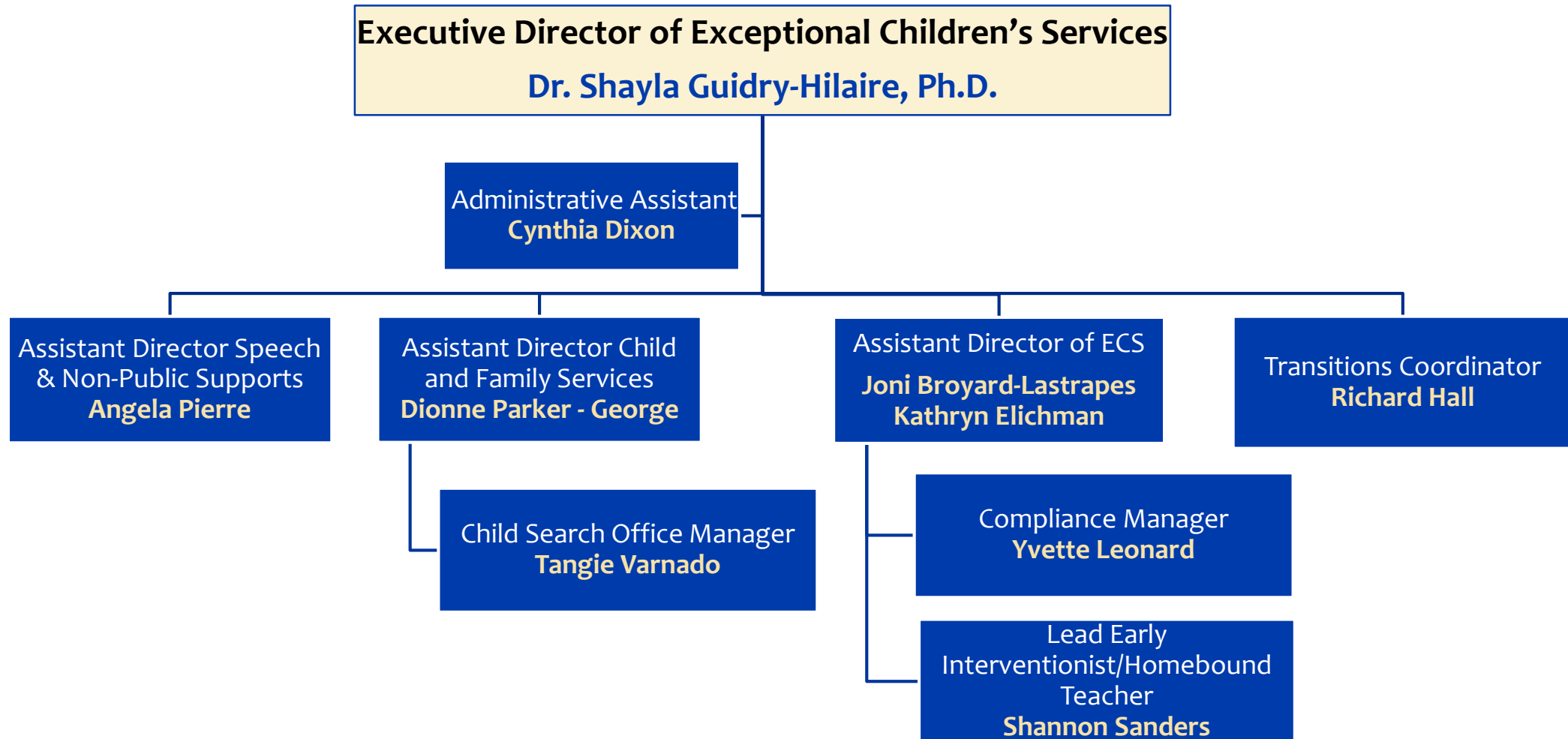


Finance: Child Nutrition





Schools Office: Exceptional Children's Services



Schools Office: Exceptional Children's Services

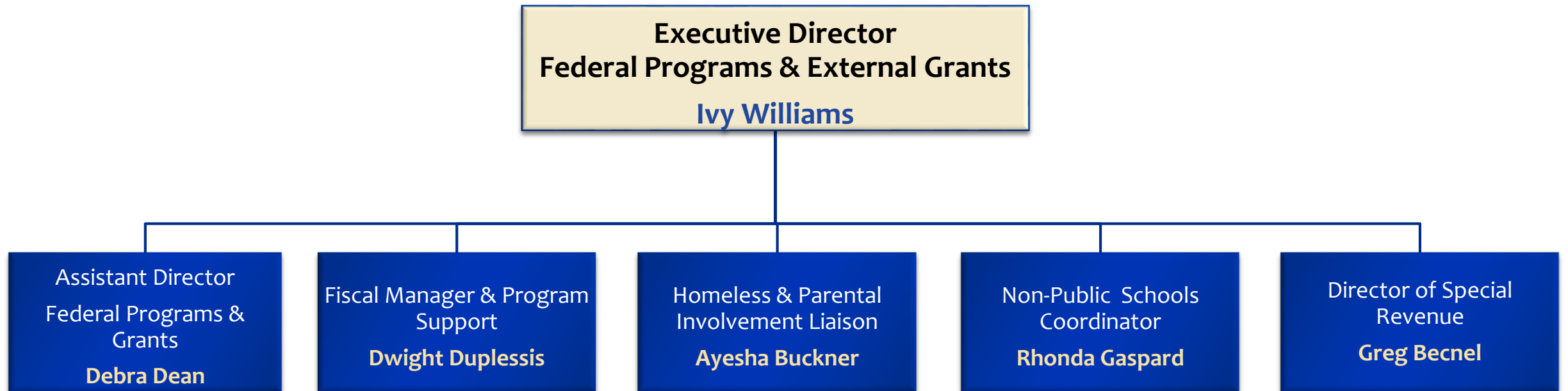


Speech Pathologists, Support & Appraisal, Aides, Social Workers, and Hourly Support

| | | | | |
|----------------------|-------------------|---------------------|------------------|-------------------|
| Bonita Abadie | Waynette Combs | Larissa Lewis | Ashley Nunez | Jasmine Scott |
| Terese Alexander | Nakia Crockett | Cayla Littles | Marilyn O'connor | Patricia Smith |
| Tracy Bercy | Cynthia Dixon | Yvette Leonard | Venus Parker | Carolyn Tate |
| Kim Bishop | Edra Grimm | Stephanie Lorio | Patricia Parker | Lerqueldra Turner |
| Wendy Bordenave | Rhonda Guillory | Manya Louis | Johnny Payton | Tangie Varnado |
| C'onda Bowman | Kate Helbig | Lawanda Love | Conneen Powell | Shontra Varnado |
| Grace Britsch | Kandace Houston | Linda McGary | Helen Psareas | |
| Tamyra Brooks Joseph | Rebecca Jamison | Dawne Moffett | Jennifer Rious | |
| Jennifer Broyard | Barbara Jefferson | Norwatha Monconduit | Kenya Robertson | |
| Erin Byrne | Alethea Johnson | Gloria Moore | Cheryl Robichaux | |
| Maureen Cadres | Adrian Jordan | Dorothy Moses | Shannon Sanders | |
| Kristin Castilla | Kirsten Kempele | Julie Navar | Hila Savoie | |
| Janice Charleville | William Lavender | Tanya Norris | Dane Schindler | |

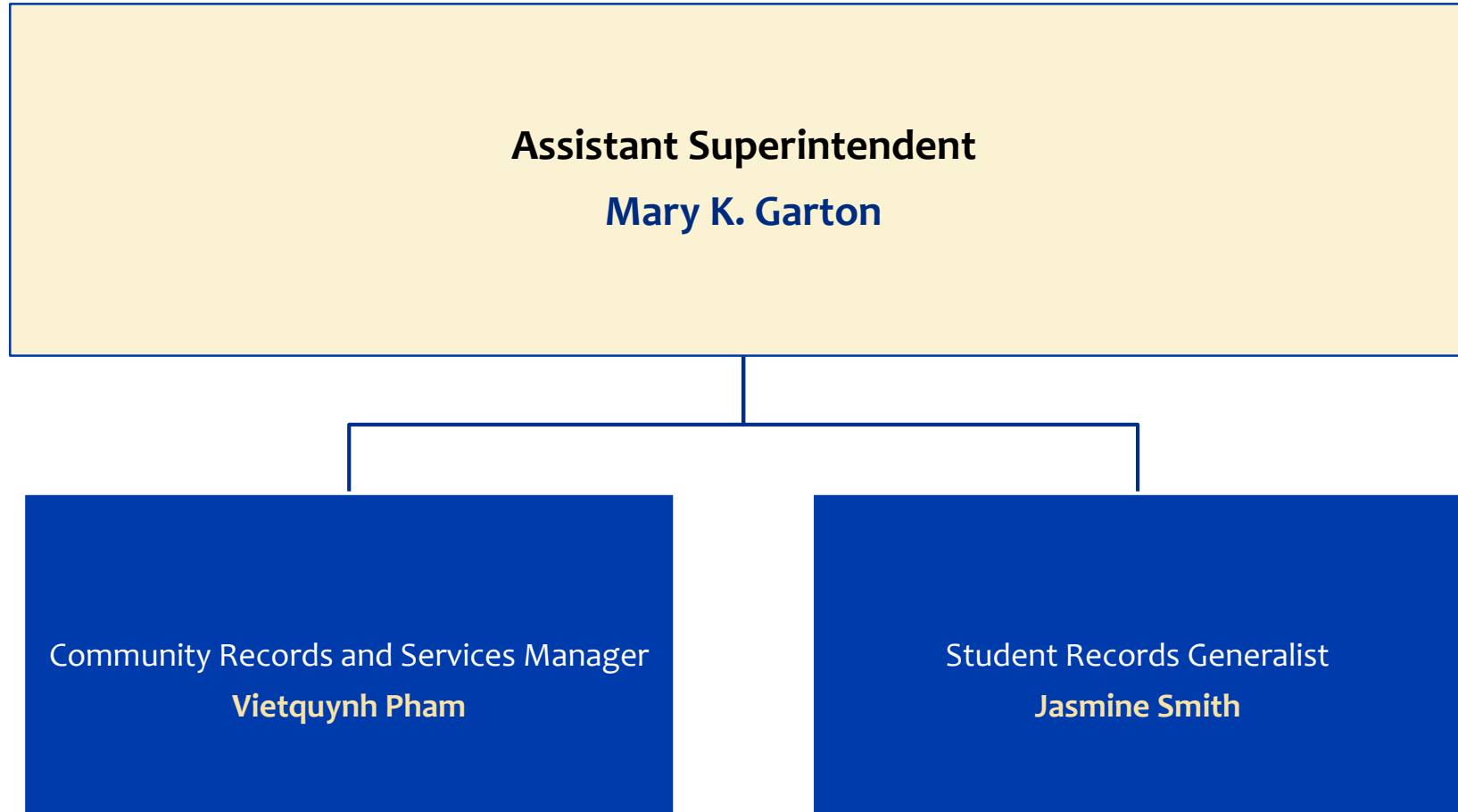


Schools Office: Federal Programs & External Grants



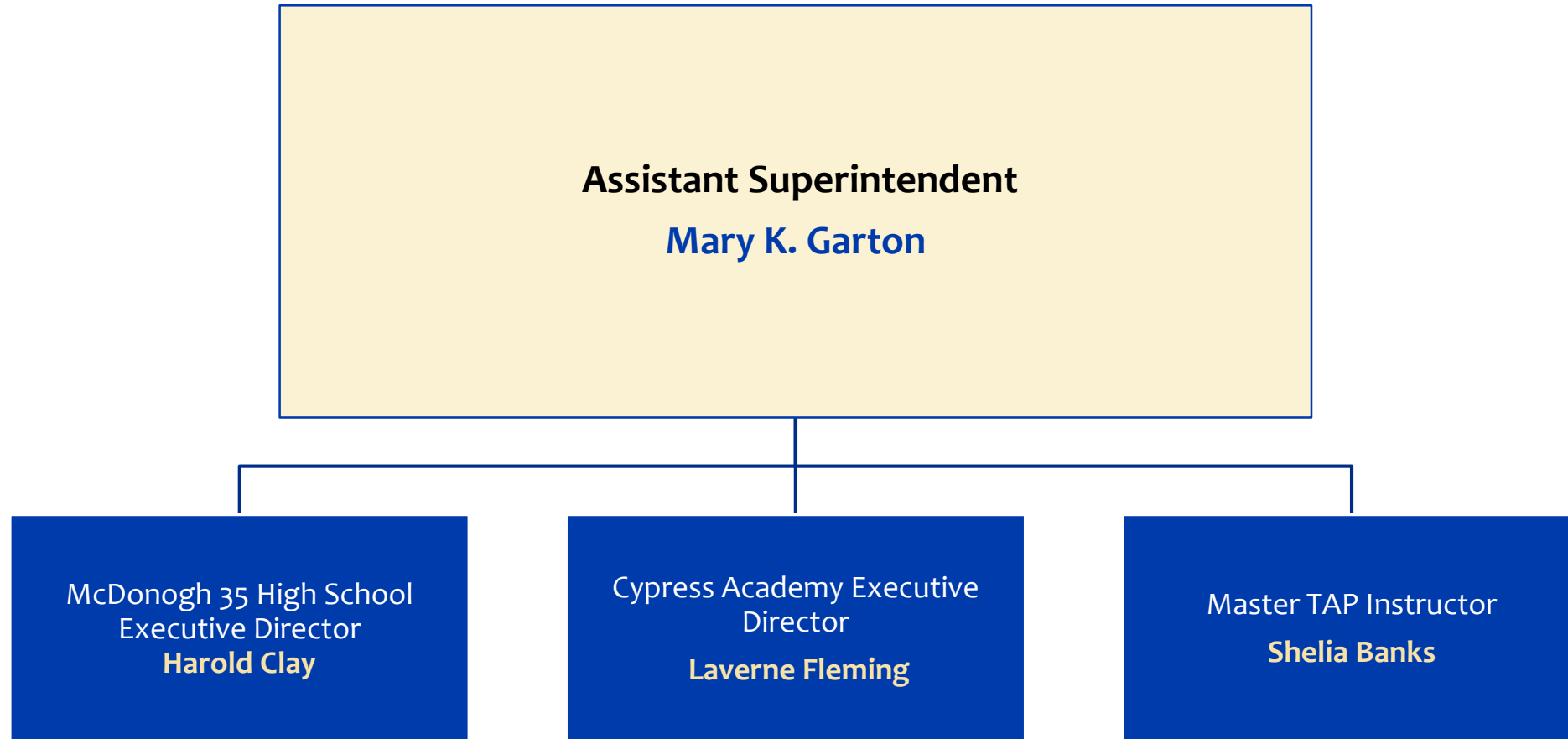


Schools Office: Assessment, Records and Interpretation/Translation Services



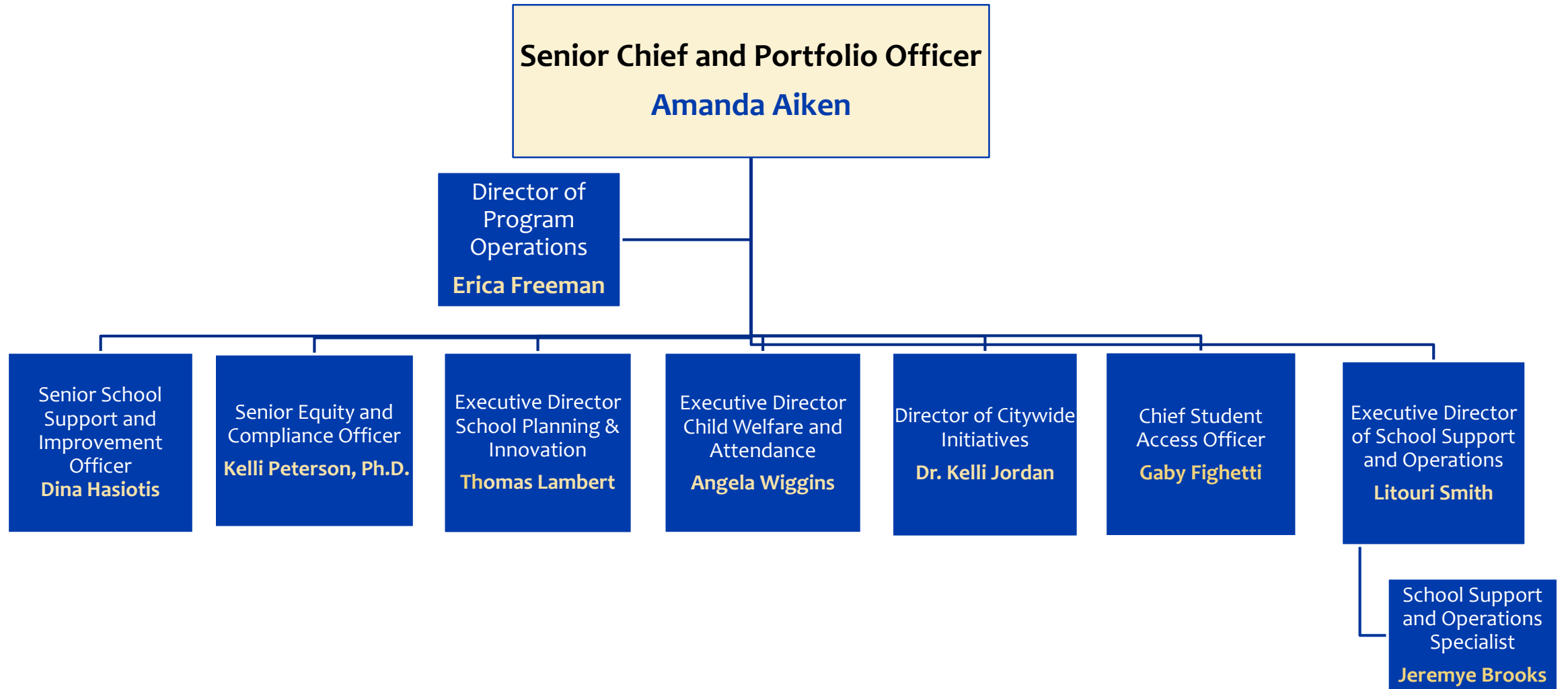


Schools Office: Direct Run Schools Team



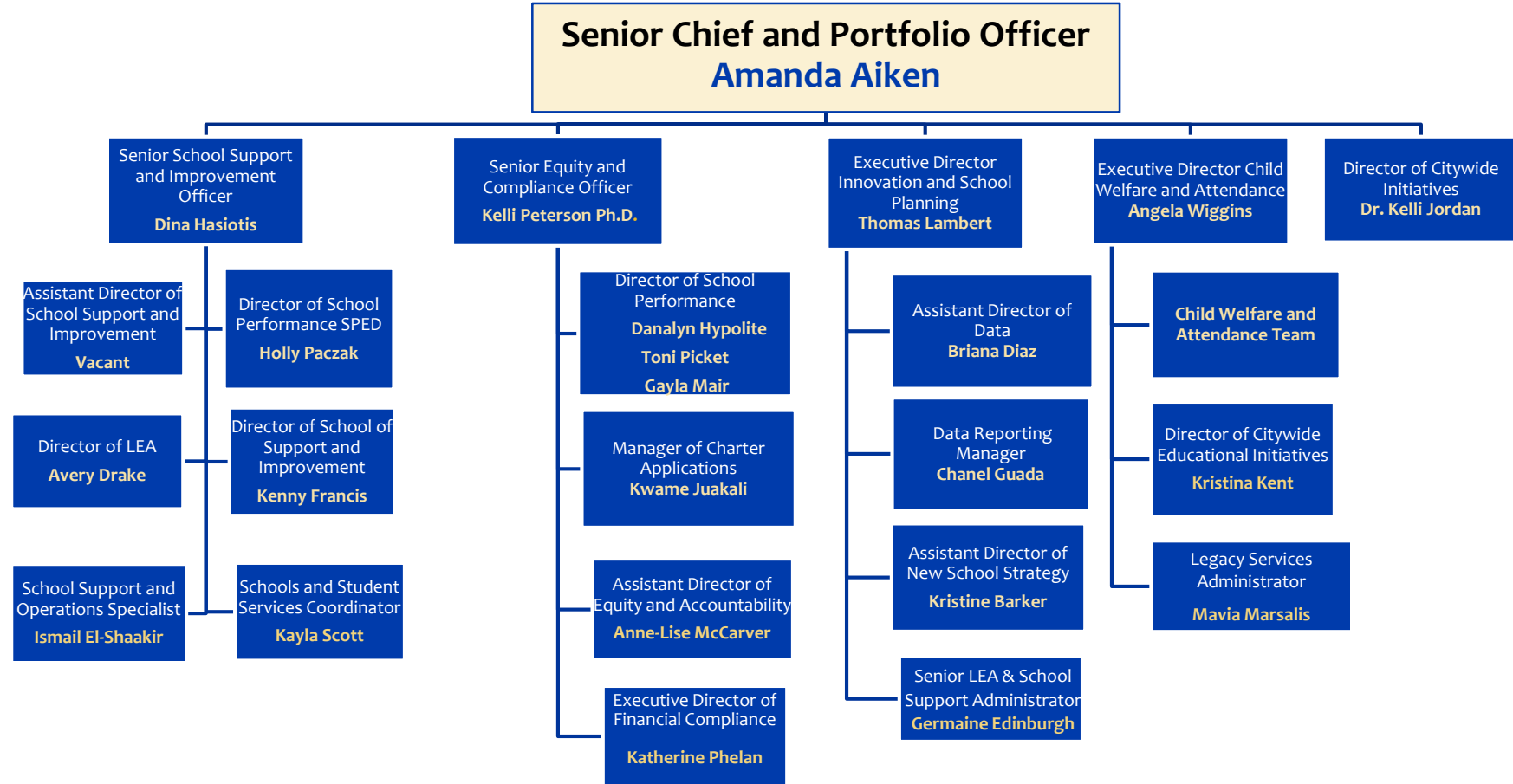


Senior Chief and Portfolio Officer





Portfolio Office

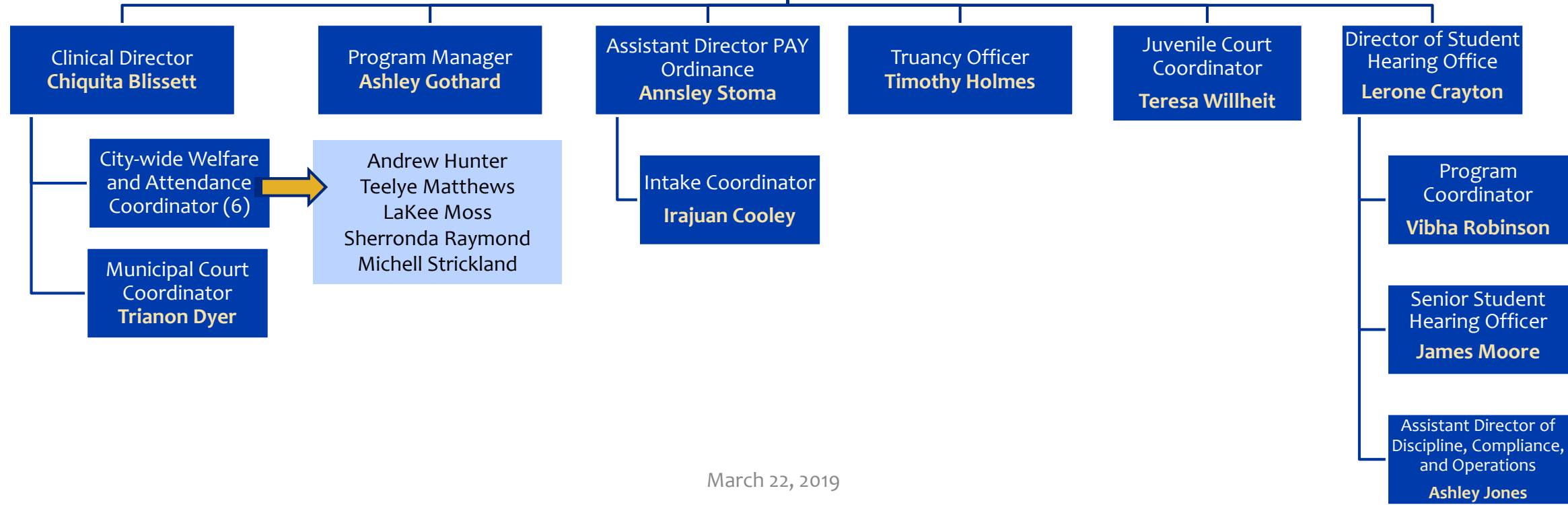




Child Welfare and Attendance Office

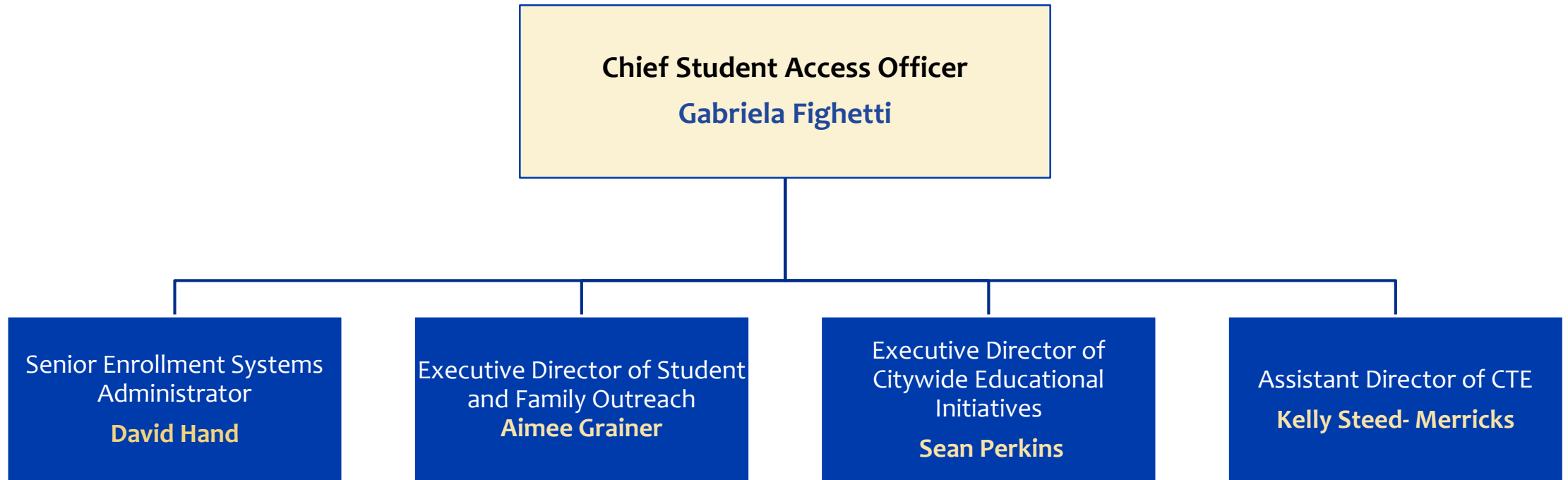
Executive Director
Child Welfare and Attendance
Angela Wiggins

Director of Citywide Educational Initiatives
Kristina Kent



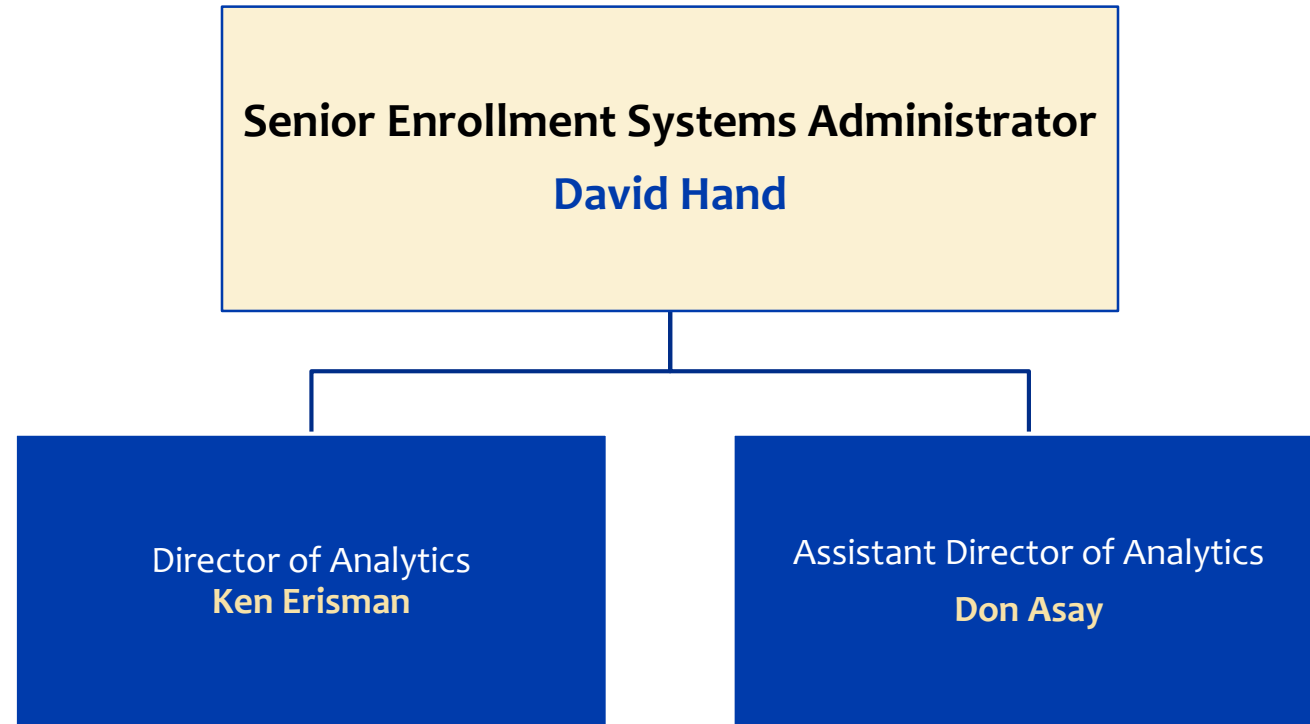


Student Access Office





Student Access Office





Student Access Office

